



NDUA6 Polyclonal Antibody

Catalog No	BYab-05795
Isotype	IgG
Reactivity	Human;Mouse
Applications	WB;ELISA
Gene Name	NDUFA6 LYRM6 NADHB14
Protein Name	NADH dehydrogenase [ubiquinone] 1 alpha subcomplex subunit 6 (Complex I-B14) (CI-B14) (LYR motif-containing protein 6) (NADH-ubiquinone oxidoreductase B14 subunit)
Immunogen	Synthesized peptide derived from human protein . at AA range: 20-100
Specificity	NDUA6 Polyclonal Antibody detects endogenous levels of protein.
Formulation	Liquid in PBS containing 50% glycerol, and 0.02% sodium azide.
Source	Polyclonal, Rabbit,IgG
Purification	The antibody was affinity-purified from rabbit antiserum by affinity-chromatography using epitope-specific immunogen.
Dilution	WB 1:500-2000 ELISA 1:5000-20000
Concentration	1 mg/ml
Purity	≥90%
Storage Stability	-20°C/1 year
Synonyms	
Observed Band	16kD
Cell Pathway	Mitochondrion inner membrane ; Peripheral membrane protein ; Matrix side .
Tissue Specificity	Heart,Lymph,Skeletal muscle,
Function	function:Accessory subunit of the mitochondrial membrane respiratory chain NADH dehydrogenase (Complex I), that is believed to be not involved in catalysis. Complex I functions in the transfer of electrons from NADH to the respiratory chain. The immediate electron acceptor for the enzyme is believed to be ubiquinone.,similarity:Belongs to the complex I LYR family.,subunit:Mammalian complex I is composed of 45 different subunits.,
Background	function:Accessory subunit of the mitochondrial membrane respiratory chain NADH dehydrogenase (Complex I), that is believed to be not involved in catalysis. Complex I functions in the transfer of electrons from NADH to the respiratory chain. The immediate electron acceptor for the enzyme is believed to be

Nanjing BYabscience technology Co.,Ltd



ubiquinone.,similarity:Belongs to the complex I LYR family.,subunit:Mammalian complex I is composed of 45 different subunits.,

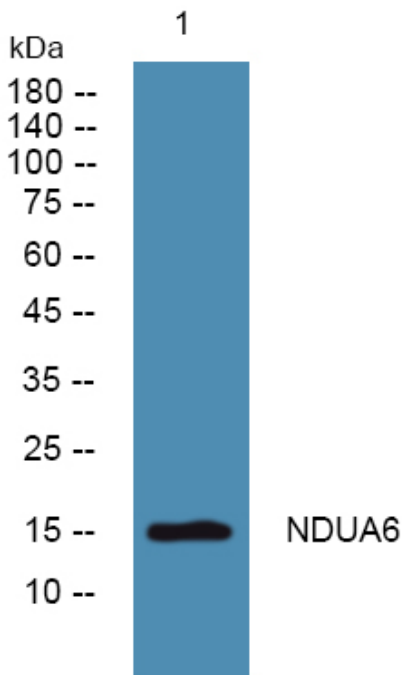
matters needing attention

Avoid repeated freezing and thawing!

Usage suggestions

This product can be used in immunological reaction related experiments. For more information, please consult technical personnel.

Products Images



Western blot analysis of lysates from SH-SY5Y cells, primary antibody was diluted at 1:1000, 4° over night