



MYO5C Polyclonal Antibody

Catalog No	BYab-05781
Isotype	IgG
Reactivity	Human;Rat;Mouse;
Applications	WB;ELISA
Gene Name	MYO5C
Protein Name	Unconventional myosin-Vc
Immunogen	Synthesized peptide derived from human protein . at AA range: 850-930
Specificity	MYO5C Polyclonal Antibody detects endogenous levels of protein.
Formulation	Liquid in PBS containing 50% glycerol, and 0.02% sodium azide.
Source	Polyclonal, Rabbit,IgG
Purification	The antibody was affinity-purified from rabbit antiserum by affinity-chromatography using epitope-specific immunogen.
Dilution	WB 1:500-2000 ELISA 1:5000-20000
Concentration	1 mg/ml
Purity	≥90%
Storage Stability	-20°C/1 year
Synonyms	
Observed Band	191kD
Cell Pathway	myosin complex,extracellular exosome,
Tissue Specificity	Expressed chiefly in non-neuronal tissues. Particularly abundant in epithelial and glandular tissues including pancreas, prostate, mammary, stomach, colon and lung.
Function	function:May be involved in transferrin trafficking. Likely to power actin-based membrane trafficking in many physiologically crucial tissues.,similarity:Contains 1 dilute domain.,similarity:Contains 1 myosin head-like domain.,similarity:Contains 6 IQ domains.,tissue specificity:Expressed chiefly in non-neuronal tissues. Particularly abundant in epithelial and glandular tissues including pancreas, prostate, mammary, stomach, colon and lung.,
Background	function:May be involved in transferrin trafficking. Likely to power actin-based membrane trafficking in many physiologically crucial tissues.,similarity:Contains 1 dilute domain.,similarity:Contains 1 myosin head-like domain.,similarity:Contains 6 IQ domains.,tissue specificity:Expressed chiefly in non-neuronal tissues.

Nanjing BYabscience technology Co.,Ltd



Particularly abundant in epithelial and glandular tissues including pancreas, prostate, mammary, stomach, colon and lung.,

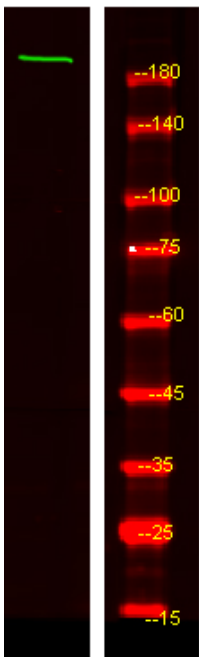
matters needing attention

Avoid repeated freezing and thawing!

Usage suggestions

This product can be used in immunological reaction related experiments. For more information, please consult technical personnel.

Products Images



Western Blot analysis of HEK293 lysis, using primary antibody at 1:1000 dilution. Secondary antibody(catalog#:RS23920) was diluted at 1:10000