



# MOG Polyclonal Antibody

<b>Catalog No</b>	BYab-05765
<b>Isotype</b>	IgG
<b>Reactivity</b>	Human;Mouse;Rat
<b>Applications</b>	WB;ELISA
<b>Gene Name</b>	MOG
<b>Protein Name</b>	Myelin-oligodendrocyte glycoprotein
<b>Immunogen</b>	Synthesized peptide derived from human protein . at AA range: 30-110
<b>Specificity</b>	MOG Polyclonal Antibody detects endogenous levels of protein.
<b>Formulation</b>	Liquid in PBS containing 50% glycerol, and 0.02% sodium azide.
<b>Source</b>	Polyclonal, Rabbit,IgG
<b>Purification</b>	The antibody was affinity-purified from rabbit antiserum by affinity-chromatography using epitope-specific immunogen.
<b>Dilution</b>	WB 1:500-2000 ELISA 1:5000-20000
<b>Concentration</b>	1 mg/ml
<b>Purity</b>	≥90%
<b>Storage Stability</b>	-20°C/1 year
<b>Synonyms</b>	
<b>Observed Band</b>	27kD
<b>Cell Pathway</b>	[Isoform 1]: Cell membrane ; Multi-pass membrane protein .; [Isoform 5]: Cell membrane ; Multi-pass membrane protein .; [Isoform 2]: Cell membrane ; Single-pass type I membrane protein .; [Isoform 3]: Cell membrane ; Single-pass type I membrane protein .; [Isoform 4]: Cell membrane ; Single-pass type I membrane protein .; [Isoform 6]: Cell membrane ; Single-pass type I membrane protein .; [Isoform 7]: Cell membrane ; Single-pass type I membrane protein .; [Isoform 8]: Cell membrane ; Single-pass type I membrane protein .; [Isoform 9]: Cell membrane ; Single-pass type I membrane protein .
<b>Tissue Specificity</b>	Found exclusively in the CNS, where it is localized on the surface of myelin and oligodendrocyte cytoplasmic membranes.
<b>Function</b>	alternative products:Additional isoforms seem to exist,caution:Do not confuse myelin-oligodendrocyte glycoprotein (MOG) with oligodendrocyte-myelin glycoprotein (OMG).,function:Minor component of the myelin sheath. May be involved in completion and/or maintenance of the myelin sheath and in cell-cell communication.,online information:Myelin oligodendrocyte glycoprotein

Nanjing BYabscience technology Co.,Ltd



entry,similarity:Belongs to the immunoglobulin superfamily. BTN/MOG family.,similarity:Contains 1 Ig-like V-type (immunoglobulin-like) domain.,subunit:May form homo- or heterodimers between the different isoforms.,tissue specificity:Found exclusively in the CNS, where it is localized on the surface of myelin and oligodendrocyte cytoplasmic membranes.,

### Background

The product of this gene is a membrane protein expressed on the oligodendrocyte cell surface and the outermost surface of myelin sheaths. Due to this localization, it is a primary target antigen involved in immune-mediated demyelination. This protein may be involved in completion and maintenance of the myelin sheath and in cell-cell communication. Alternatively spliced transcript variants encoding different isoforms have been identified. [provided by RefSeq, Jul 2008],

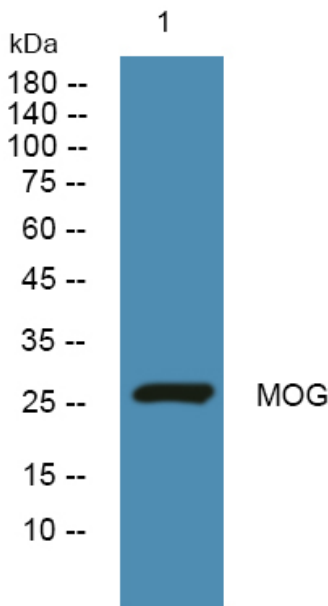
### matters needing attention

Avoid repeated freezing and thawing!

### Usage suggestions

This product can be used in immunological reaction related experiments. For more information, please consult technical personnel.

## Products Images



Western blot analysis of lysates from HCT116 cells, primary antibody was diluted at 1:1000, 4° over night