



# MOBP Polyclonal Antibody

|                                  |  |
|----------------------------------|--|
| <b>Catalog No</b>                | BYab-05764   |
| <b>Isotype</b>                   | IgG  |
| <b>Reactivity</b>                | Human;Rat;Mouse  |
| <b>Applications</b>              | WB;ELISA   |
| <b>Gene Name</b>                 | MOBP   |
| <b>Protein Name</b>              | Myelin-associated oligodendrocyte basic protein  |
| <b>Immunogen</b>                 | Synthesized peptide derived from human protein . at AA range: 30-110   |
| <b>Specificity</b>               | MOBP Polyclonal Antibody detects endogenous levels of protein.   |
| <b>Formulation</b>               | Liquid in PBS containing 50% glycerol, and 0.02% sodium azide.   |
| <b>Source</b>                    | Polyclonal, Rabbit,IgG   |
| <b>Purification</b>              | The antibody was affinity-purified from rabbit antiserum by affinity-chromatography using epitope-specific immunogen.  |
| <b>Dilution</b>                  | WB 1:500-2000 ELISA 1:5000-20000   |
| <b>Concentration</b>             | 1 mg/ml  |
| <b>Purity</b>                    | ≥90%   |
| <b>Storage Stability</b>         | -20°C/1 year   |
| <b>Synonyms</b>                  |  |
| <b>Observed Band</b>             | 20kD   |
| <b>Cell Pathway</b>              | Cytoplasm, perinuclear region. Present in the major dense line of CNS myelin. .  |
| <b>Tissue Specificity</b>        | Brain,Spinal cord,   |
| <b>Function</b>                  | function:May play a role in compacting or stabilizing the myelin sheath, possibly by binding the negatively charged acidic phospholipids of the cytoplasmic membrane.,subcellular location:Present in the major dense line of CNS myelin., |
| <b>Background</b>                | function:May play a role in compacting or stabilizing the myelin sheath, possibly by binding the negatively charged acidic phospholipids of the cytoplasmic membrane.,subcellular location:Present in the major dense line of CNS myelin., |
| <b>matters needing attention</b> | Avoid repeated freezing and thawing!   |

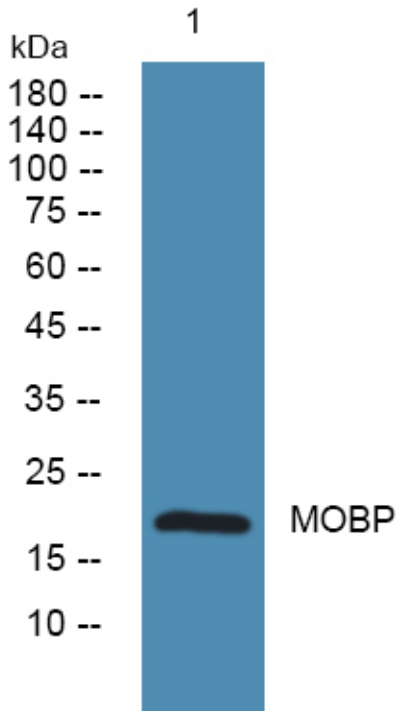
Nanjing BYabscience technology Co.,Ltd



**Usage suggestions**

This product can be used in immunological reaction related experiments. For more information, please consult technical personnel.

**Products Images**



Western blot analysis of lysates from SH-SY5Y cells, primary antibody was diluted at 1:1000, 4° over night