



MAL Polyclonal Antibody

Catalog No	BYab-05762
Isotype	IgG
Reactivity	Human;Mouse;Rat
Applications	WB;ELISA
Gene Name	MAL
Protein Name	Myelin and lymphocyte protein (T-lymphocyte maturation-associated protein)
Immunogen	Synthesized peptide derived from human protein . at AA range: 70-150
Specificity	MAL Polyclonal Antibody detects endogenous levels of protein.
Formulation	Liquid in PBS containing 50% glycerol, and 0.02% sodium azide.
Source	Polyclonal, Rabbit,IgG
Purification	The antibody was affinity-purified from rabbit antiserum by affinity-chromatography using epitope-specific immunogen.
Dilution	WB 1:500-2000 ELISA 1:5000-20000
Concentration	1 mg/ml
Purity	≥90%
Storage Stability	-20°C/1 year
Synonyms	
Observed Band	16kD
Cell Pathway	Membrane; Multi-pass membrane protein.
Tissue Specificity	Brain,Lung,Lymphocyte,Placenta,
Function	developmental stage:Expressed in the intermediate and late stages of T-cell differentiation.,function:Could be an important component in vesicular trafficking cycling between the Golgi complex and the apical plasma membrane. Could be involved in myelin biogenesis and/or myelin function.,PTM:Lipoprotein.,similarity:Belongs to the MAL family.,similarity:Contains 1 MARVEL domain.,
Background	The protein encoded by this gene is a highly hydrophobic integral membrane protein belonging to the MAL family of proteolipids. The protein has been localized to the endoplasmic reticulum of T-cells and is a candidate linker protein in T-cell signal transduction. In addition, this proteolipid is localized in compact myelin of cells in the nervous system and has been implicated in myelin biogenesis and/or

Nanjing BYabscience technology Co.,Ltd



function. The protein plays a role in the formation, stabilization and maintenance of glycosphingolipid-enriched membrane microdomains. Down-regulation of this gene has been associated with a variety of human epithelial malignancies. Alternative splicing produces four transcript variants which vary from each other by the presence or absence of alternatively spliced exons 2 and 3. [provided by RefSeq, May 2012],

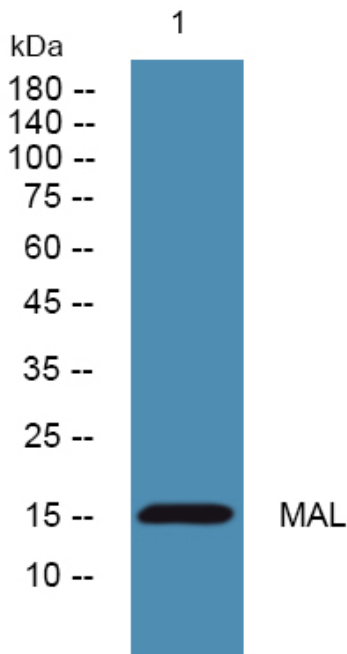
matters needing attention

Avoid repeated freezing and thawing!

Usage suggestions

This product can be used in immunological reaction related experiments. For more information, please consult technical personnel.

Products Images



Western blot analysis of lysates from SW480 cells, primary antibody was diluted at 1:1000, 4° over night