



# MAP1B Polyclonal Antibody

<b>Catalog No</b>	BYab-05729
<b>Isotype</b>	IgG
<b>Reactivity</b>	Human;Rat;Mouse
<b>Applications</b>	IHC;IF
<b>Gene Name</b>	MAP1B
<b>Protein Name</b>	Microtubule-associated protein 1B (MAP-1B) [Cleaved into: MAP1B heavy chain; MAP1 light chain LC1]
<b>Immunogen</b>	Synthesized peptide derived from human protein . at AA range: 480-560
<b>Specificity</b>	MAP1B Polyclonal Antibody detects endogenous levels of protein.
<b>Formulation</b>	Liquid in PBS containing 50% glycerol, and 0.02% sodium azide.
<b>Source</b>	Polyclonal, Rabbit,IgG
<b>Purification</b>	The antibody was affinity-purified from rabbit antiserum by affinity-chromatography using epitope-specific immunogen.
<b>Dilution</b>	IHC-p 1:50-300. IF 1:50-200
<b>Concentration</b>	1 mg/ml
<b>Purity</b>	≥90%
<b>Storage Stability</b>	-20°C/1 year
<b>Synonyms</b>	
<b>Observed Band</b>	271kD
<b>Cell Pathway</b>	Cytoplasm, cytoskeleton . Cytoplasm . Cell junction, synapse . Cell projection, dendritic spine . Colocalizes with DAPK1 in the microtubules and cortical actin fibers. . ; [MAP1 light chain LC1]: Cytoplasm .
<b>Tissue Specificity</b>	Amygdala,Brain,Cajal-Retzius cell,Epithelium,Eye,Fetal brain,Fetal
<b>Function</b>	domain:Has a highly basic region with many copies of the sequence KKEE and KKEI/V, repeated but not at fixed intervals, which is responsible for the binding of MAP1B to microtubules.,function:The function of brain MAPS is essentially unknown. Phosphorylated MAP1B may play a role in the cytoskeletal changes that accompany neurite extension. Possibly MAP1B Binds to at least two tubulin subunits in the polymer, and this bridging of subunits might be involved in nucleating microtubule polymerization and in stabilizing microtubules.,PTM:LC1 is generated from MAP1B by proteolytic processing.,PTM:Phosphorylated upon DNA damage, probably by ATM or ATR.,similarity:Belongs to the MAP1 family.,subunit:3 different light chains, LC1, LC2 and LC3, can associate with

Nanjing BYabscience technology Co.,Ltd



MAP1A and MAP1B proteins. LC1 interacts with the amino-terminal region of MAP1B. Interacts with ANP32A and TIAM2 (By similarity). Interac

**Background**

This gene encodes a protein that belongs to the microtubule-associated protein family. The proteins of this family are thought to be involved in microtubule assembly, which is an essential step in neurogenesis. The product of this gene is a precursor polypeptide that presumably undergoes proteolytic processing to generate the final MAP1B heavy chain and LC1 light chain. Gene knockout studies of the mouse microtubule-associated protein 1B gene suggested an important role in development and function of the nervous system. [provided by RefSeq, Jul 2008],

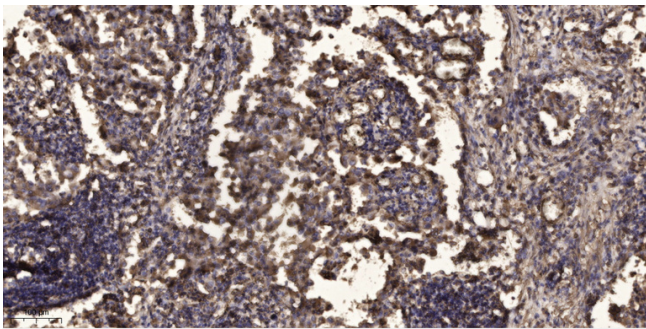
**matters needing attention**

Avoid repeated freezing and thawing!

**Usage suggestions**

This product can be used in immunological reaction related experiments. For more information, please consult technical personnel.

**Products Images**



Immunohistochemical analysis of paraffin-embedded human Squamous cell carcinoma of lung. 1, Antibody was diluted at 1:200(4° overnight). 2, Tris-EDTA,pH9.0 was used for antigen retrieval. 3,Secondary antibody was diluted at 1:200(room temperature, 45min).