



LRBA Polyclonal Antibody

Catalog No	BYab-05695
Isotype	IgG
Reactivity	Human;Mouse
Applications	IHC;IF
Gene Name	LRBA BGL CDC4L LBA
Protein Name	Lipopolysaccharide-responsive and beige-like anchor protein (Beige-like protein) (CDC4-like protein)
Immunogen	Synthesized peptide derived from human protein . at AA range: 1970-2050
Specificity	LRBA Polyclonal Antibody detects endogenous levels of protein.
Formulation	Liquid in PBS containing 50% glycerol, and 0.02% sodium azide.
Source	Polyclonal, Rabbit,IgG
Purification	The antibody was affinity-purified from rabbit antiserum by affinity-chromatography using epitope-specific immunogen.
Dilution	IHC-p 1:50-300. IF 1:50-200
Concentration	1 mg/ml
Purity	≥90%
Storage Stability	-20°C/1 year
Synonyms	
Observed Band	314kD
Cell Pathway	Cell membrane ; Single-pass membrane protein . Endoplasmic reticulum membrane ; Single-pass membrane protein . Golgi apparatus, trans-Golgi network membrane ; Single-pass membrane protein . Lysosome membrane ; Single-pass membrane protein .
Tissue Specificity	Ubiquitous.
Function	caution:Was originally (PubMed:1505956) said to be similar to yeast CDC4, but that similarity is very limited.,induction:By lipopolysaccharide (LPS).,PTM:Phosphorylated upon DNA damage, probably by ATM or ATR.,similarity:Contains 1 BEACH domain.,similarity:Contains 6 WD repeats.,
Background	The protein encoded by this gene is a member of the WDL-BEACH-WD (WBW) gene family. Its expression is induced in B cells and macrophages by bacterial lipopolysaccharides (LPS). The encoded protein associates with protein kinase A and may be involved in leading intracellular vesicles to activated receptor complexes, which aids in the secretion and/or membrane deposition of immune

Nanjing BYabscience technology Co.,Ltd



effector molecules. Defects in this gene are associated with the disorder common variable immunodeficiency-8 with autoimmunity. Two transcript variants encoding different isoforms have been found for this gene. [provided by RefSeq, Dec 2012],

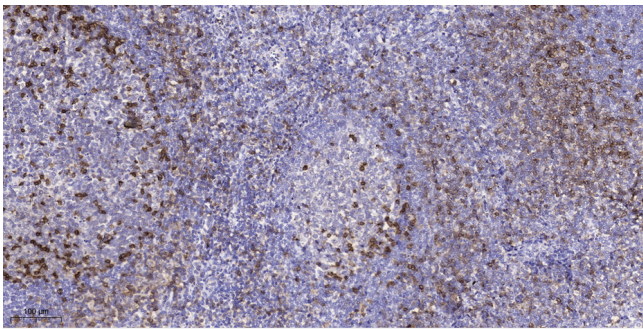
matters needing attention

Avoid repeated freezing and thawing!

Usage suggestions

This product can be used in immunological reaction related experiments. For more information, please consult technical personnel.

Products Images



Immunohistochemical analysis of paraffin-embedded human tonsil. 1, Antibody was diluted at 1:200(4° overnight). 2, Tris-EDTA,pH9.0 was used for antigen retrieval. 3,Secondary antibody was diluted at 1:200(room temperature, 45min).