



# LHX5 Polyclonal Antibody

<b>Catalog No</b>	BYab-05692
<b>Isotype</b>	IgG
<b>Reactivity</b>	Human;Rat;Mouse
<b>Applications</b>	WB;ELISA
<b>Gene Name</b>	LHX5
<b>Protein Name</b>	LIM/homeobox protein Lhx5 (LIM homeobox protein 5)
<b>Immunogen</b>	Synthesized peptide derived from human protein . at AA range: 130-210
<b>Specificity</b>	LHX5 Polyclonal Antibody detects endogenous levels of protein.
<b>Formulation</b>	Liquid in PBS containing 50% glycerol, and 0.02% sodium azide.
<b>Source</b>	Polyclonal, Rabbit,IgG
<b>Purification</b>	The antibody was affinity-purified from rabbit antiserum by affinity-chromatography using epitope-specific immunogen.
<b>Dilution</b>	WB 1:500-2000 ELISA 1:5000-20000
<b>Concentration</b>	1 mg/ml
<b>Purity</b>	≥90%
<b>Storage Stability</b>	-20°C/1 year
<b>Synonyms</b>	
<b>Observed Band</b>	44kD
<b>Cell Pathway</b>	Nucleus .
<b>Tissue Specificity</b>	Expressed in fetal brain and in various regions of the adult central nervous system including the spinal cord, the thalamus, and the cerebellum.
<b>Function</b>	function:Plays an essential role in the regulation of neuronal differentiation and migration during development of the central nervous system.,similarity:Contains 1 homeobox DNA-binding domain.,similarity:Contains 2 LIM zinc-binding domains.,tissue specificity:Expressed in fetal brain and in various regions of the adult central nervous system including the spinal cord, the thalamus, and the cerebellum.,
<b>Background</b>	This gene encodes a protein belonging to a large protein family, members of which carry the LIM domain, a unique cysteine-rich zinc-binding domain. The encoded protein may function as a transcriptional regulator and be involved in the control of differentiation and development of the forebrain. In mice, this protein is essential for the regulation of precursor cell proliferation and the control of

Nanjing BYabscience technology Co.,Ltd



neuronal differentiation and migration during hippocampal development. This protein is involved in learning and motor functions in adult mice. [provided by RefSeq, Jul 2008],

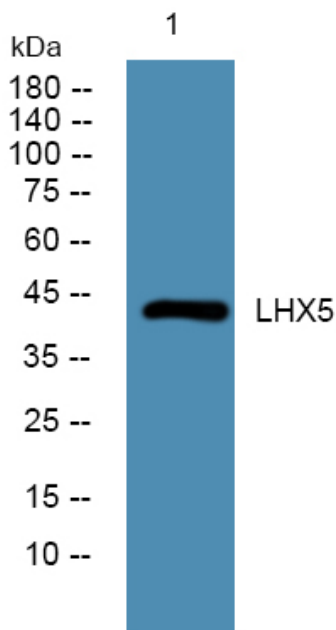
**matters needing attention**

Avoid repeated freezing and thawing!

**Usage suggestions**

This product can be used in immunological reaction related experiments. For more information, please consult technical personnel.

## Products Images



Western blot analysis of lysates from A431 cells, primary antibody was diluted at 1:1000, 4° over night