



KI2S5 Polyclonal Antibody

Catalog No	BYab-05687
Isotype	IgG
Reactivity	Human;Rat;Mouse;
Applications	WB;ELISA
Gene Name	KIR2DS5 CD158G NKAT9
Protein Name	Killer cell immunoglobulin-like receptor 2DS5 (CD158 antigen-like family member G) (MHC class I NK cell receptor) (Natural killer-associated transcript 9) (NKAT-9) (CD antigen CD158g)
Immunogen	Synthesized peptide derived from part region of human protein
Specificity	KI2S5 Polyclonal Antibody detects endogenous levels of protein.
Formulation	Liquid in PBS containing 50% glycerol, and 0.02% sodium azide.
Source	Polyclonal, Rabbit,IgG
Purification	The antibody was affinity-purified from rabbit antiserum by affinity-chromatography using epitope-specific immunogen.
Dilution	WB 1:500-2000 ELISA 1:5000-20000
Concentration	1 mg/ml
Purity	≥90%
Storage Stability	-20°C/1 year
Synonyms	
Observed Band	33kD
Cell Pathway	Cell membrane ; Single-pass type I membrane protein ; Extracellular side .
Tissue Specificity	Expressed on a discrete subset of peripheral blood NK cells.
Function	function:Receptor on natural killer (NK) cells for HLA-C alleles. Does not inhibit the activity of NK cells.,similarity:Belongs to the immunoglobulin superfamily.,similarity:Contains 2 Ig-like C2-type (immunoglobulin-like) domains.,
Background	Killer cell immunoglobulin-like receptors (KIRs) are transmembrane glycoproteins expressed by natural killer cells and subsets of T cells. The KIR genes are polymorphic and highly homologous and they are found in a cluster on chromosome 19q13.4 within the 1 Mb leukocyte receptor complex (LRC). The gene content of the KIR gene cluster varies among haplotypes, although several "framework" genes are found in all haplotypes (KIR3DL3, KIR3DP1, KIR3DL4, KIR3DL2). The KIR proteins are classified by the number of

Nanjing BYabscience technology Co.,Ltd



extracellular immunoglobulin domains (2D or 3D) and by whether they have a long (L) or short (S) cytoplasmic domain. KIR proteins with the long cytoplasmic domain transduce inhibitory signals upon ligand binding via an immune tyrosine-based inhibitory motif (ITIM), while KIR proteins with the short cytoplasmic domain lack the

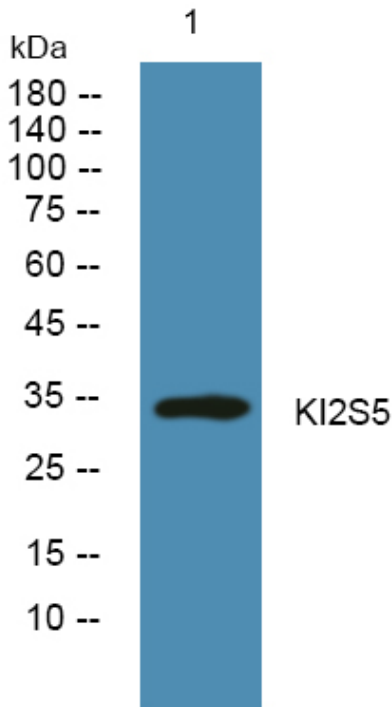
matters needing attention

Avoid repeated freezing and thawing!

Usage suggestions

This product can be used in immunological reaction related experiments. For more information, please consult technical personnel.

Products Images



Western blot analysis of lysates from Jarkat cells, primary antibody was diluted at 1:1000, 4° over night