



GBB1 Polyclonal Antibody

| | |
|---------------------------|--|
| Catalog No | BYab-05627 |
| Isotype | IgG |
| Reactivity | Human;Mouse;Rat |
| Applications | WB;ELISA |
| Gene Name | GNB1 |
| Protein Name | Guanine nucleotide-binding protein G(I)/G(S)/G(T) subunit beta-1 (Transducin beta chain 1) |
| Immunogen | Synthesized peptide derived from part region of human protein |
| Specificity | GBB1 Polyclonal Antibody detects endogenous levels of protein. |
| Formulation | Liquid in PBS containing 50% glycerol, and 0.02% sodium azide. |
| Source | Polyclonal, Rabbit,IgG |
| Purification | The antibody was affinity-purified from rabbit antiserum by affinity-chromatography using epitope-specific immunogen. |
| Dilution | WB 1:500-2000 ELISA 1:5000-20000 |
| Concentration | 1 mg/ml |
| Purity | ≥90% |
| Storage Stability | -20°C/1 year |
| Synonyms | |
| Observed Band | 37kD |
| Cell Pathway | photoreceptor inner segment,intracellular,lysosomal membrane,cytosol,heterotrimeric G-protein complex,plasma membrane,membrane,dendrite,photoreceptor outer segment membrane,myelin sheath,cell body,extracellular exosome, |
| Tissue Specificity | B-cell lymphoma,Brain,Fetal brain cortex,Liver,Melanoma,Muscle,Ovarian carcinoma,PC |
| Function | function:Guanine nucleotide-binding proteins (G proteins) are involved as a modulator or transducer in various transmembrane signaling systems. The beta and gamma chains are required for the GTPase activity, for replacement of GDP by GTP, and for G protein-effector interaction.,similarity:Belongs to the WD repeat G protein beta family.,similarity:Contains 7 WD repeats.,subunit:G proteins are composed of 3 units, alpha, beta and gamma. Interacts with ARHGEF18., |
| Background | Heterotrimeric guanine nucleotide-binding proteins (G proteins), which integrate signals between receptors and effector proteins, are composed of an alpha, a beta, and a gamma subunit. These subunits are encoded by families of related |

Nanjing BYabscience technology Co.,Ltd



genes. This gene encodes a beta subunit. Beta subunits are important regulators of alpha subunits, as well as of certain signal transduction receptors and effectors. Alternative splicing results in multiple transcript variants. [provided by RefSeq, Sep 2013],

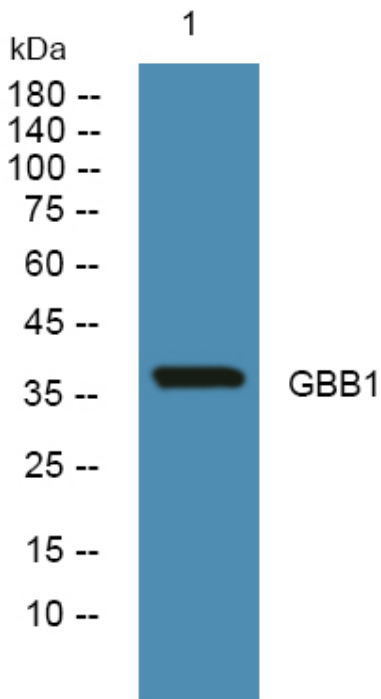
matters needing attention

Avoid repeated freezing and thawing!

Usage suggestions

This product can be used in immunological reaction related experiments. For more information, please consult technical personnel.

Products Images



Western blot analysis of lysates from SW480 cells, primary antibody was diluted at 1:1000, 4° over night