



# REM2 Polyclonal Antibody

<b>Catalog No</b>	BYab-05620
<b>Isotype</b>	IgG
<b>Reactivity</b>	Human;Rat;Mouse
<b>Applications</b>	WB;ELISA
<b>Gene Name</b>	REM2
<b>Protein Name</b>	GTP-binding protein REM 2 (Rad and Gem-like GTP-binding protein 2)
<b>Immunogen</b>	Synthesized peptide derived from part region of human protein
<b>Specificity</b>	REM2 Polyclonal Antibody detects endogenous levels of protein.
<b>Formulation</b>	Liquid in PBS containing 50% glycerol, and 0.02% sodium azide.
<b>Source</b>	Polyclonal, Rabbit,IgG
<b>Purification</b>	The antibody was affinity-purified from rabbit antiserum by affinity-chromatography using epitope-specific immunogen.
<b>Dilution</b>	WB 1:500-2000 ELISA 1:5000-20000
<b>Concentration</b>	1 mg/ml
<b>Purity</b>	≥90%
<b>Storage Stability</b>	-20°C/1 year
<b>Synonyms</b>	
<b>Observed Band</b>	37kD
<b>Cell Pathway</b>	Cell membrane .
<b>Tissue Specificity</b>	Ovary,
<b>Function</b>	caution:It is uncertain whether Met-1 or Met-59 is the initiator.,function:Binds GTP saturably and exhibits a low intrinsic rate of GTP hydrolysis.,similarity:Belongs to the small GTPase superfamily. RGK family.,
<b>Background</b>	caution:It is uncertain whether Met-1 or Met-59 is the initiator.,function:Binds GTP saturably and exhibits a low intrinsic rate of GTP hydrolysis.,similarity:Belongs to the small GTPase superfamily. RGK family.,
<b>matters needing attention</b>	Avoid repeated freezing and thawing!

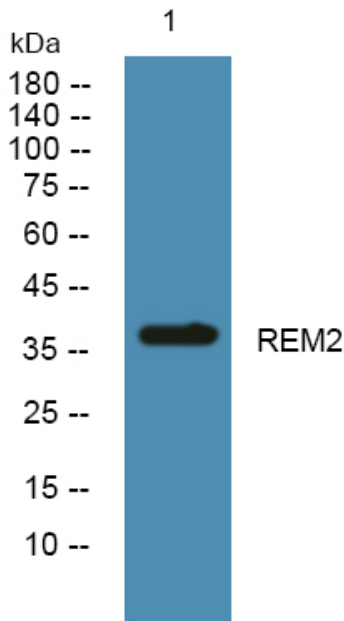
Nanjing BYabscience technology Co.,Ltd



**Usage suggestions**

This product can be used in immunological reaction related experiments. For more information, please consult technical personnel.

**Products Images**



Western blot analysis of lysates from A431 cells, primary antibody was diluted at 1:1000, 4° over night