



REM1 Polyclonal Antibody

Catalog No	BYab-05619
Isotype	IgG
Reactivity	Human;Mouse
Applications	WB;ELISA
Gene Name	REM1 GES REM
Protein Name	GTP-binding protein REM 1 (GTPase-regulating endothelial cell sprouting) (Rad and Gem-like GTP-binding protein 1)
Immunogen	Synthesized peptide derived from part region of human protein
Specificity	REM1 Polyclonal Antibody detects endogenous levels of protein.
Formulation	Liquid in PBS containing 50% glycerol, and 0.02% sodium azide.
Source	Polyclonal, Rabbit,IgG
Purification	The antibody was affinity-purified from rabbit antiserum by affinity-chromatography using epitope-specific immunogen.
Dilution	WB 1:500-2000 ELISA 1:5000-20000
Concentration	1 mg/ml
Purity	≥90%
Storage Stability	-20°C/1 year
Synonyms	
Observed Band	32kD
Cell Pathway	intracellular,membrane,
Tissue Specificity	Most highly expressed in the endothelial lining of the blood vessels in uterus and heart. Lower levels found in spleen, lymph node, kidney and testis. Also found in cells with secretory function such as the islets of Langerhans, lobule/duct epithelium in the breast, bile duct epithelium in the liver, surface epithelium in the endometrial glands of the uterus, colon mucosa and acinar cells in the pancreas and the prostate.
Function	function:Promotes endothelial cell sprouting and actin cytoskeletal reorganization. May be involved in angiogenesis. May function in Ca(2+) signaling.,similarity:Belongs to the small GTPase superfamily. RGK family.,subunit:In vitro, interacts with calmodulin in a calcium-dependent manner.,tissue specificity:Most highly expressed in the endothelial lining of the blood vessels in uterus and heart. Lower levels found in spleen, lymph node, kidney and testis. Also found in cells with secretory function such as the islets of

Nanjing BYabscience technology Co.,Ltd



Langerhans, lobule/duct epithelium in the breast, bile duct epithelium in the liver, surface epithelium in the endometrial glands of the uterus, colon mucosa and acinar cells in the pancreas and the prostate.,

Background

The protein encoded by this gene is a GTPase and member of the RAS-like GTP-binding protein family. The encoded protein is expressed in endothelial cells, where it promotes reorganization of the actin cytoskeleton and morphological changes in the cells. [provided by RefSeq, Jul 2008],

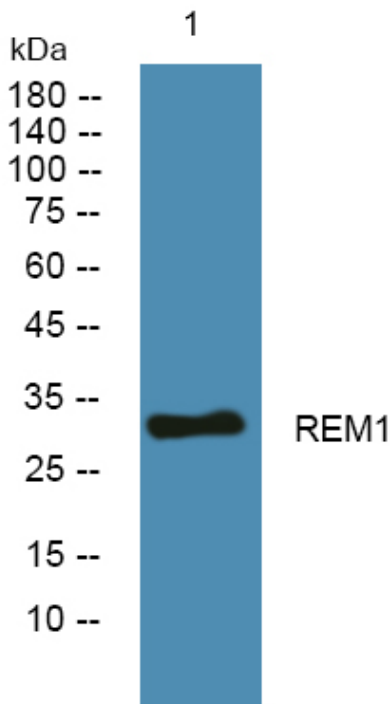
matters needing attention

Avoid repeated freezing and thawing!

Usage suggestions

This product can be used in immunological reaction related experiments. For more information, please consult technical personnel.

Products Images



Western blot analysis of lysates from PC12 cells, primary antibody was diluted at 1:1000, 4° over night