



DHB2 Polyclonal Antibody

Catalog No	BYab-05580
Isotype	IgG
Reactivity	Human;Rat;Mouse;
Applications	WB;ELISA
Gene Name	HSD17B2 EDH17B2
Protein Name	Estradiol 17-beta-dehydrogenase 2 (EC 1.1.1.62) (17-beta-hydroxysteroid dehydrogenase type 2) (17-beta-HSD 2) (20 alpha-hydroxysteroid dehydrogenase) (20-alpha-HSD) (E2DH) (Microsomal 17-beta-hydroxys
Immunogen	Synthesized peptide derived from part region of human protein
Specificity	DHB2 Polyclonal Antibody detects endogenous levels of protein.
Formulation	Liquid in PBS containing 50% glycerol, and 0.02% sodium azide.
Source	Polyclonal, Rabbit,IgG
Purification	The antibody was affinity-purified from rabbit antiserum by affinity-chromatography using epitope-specific immunogen.
Dilution	WB 1:500-2000 ELISA 1:5000-20000
Concentration	1 mg/ml
Purity	≥90%
Storage Stability	-20°C/1 year
Synonyms	
Observed Band	42kD
Cell Pathway	Endoplasmic reticulum membrane ; Single-pass type II membrane protein .
Tissue Specificity	Expressed in placenta.
Function	catalytic activity:Estradiol-17-beta + NAD(P)(+) = estrone + NAD(P)H.,catalytic activity:Testosterone + NAD(+) = androst-4-ene-3,17-dione + NADH.,function:Capable of catalyzing the interconversion of testosterone and androstenedione, as well as estradiol and estrone. Also has 20-alpha-HSD activity. Uses NADH while EDH17B3 uses NADPH.,similarity:Belongs to the short-chain dehydrogenases/reductases (SDR) family.,
Background	catalytic activity:Estradiol-17-beta + NAD(P)(+) = estrone + NAD(P)H.,catalytic activity:Testosterone + NAD(+) = androst-4-ene-3,17-dione + NADH.,function:Capable of catalyzing the interconversion of testosterone and androstenedione, as well as estradiol and estrone. Also has 20-alpha-HSD

Nanjing BYabscience technology Co.,Ltd



activity. Uses NADH while EDH17B3 uses NADPH.,similarity:Belongs to the short-chain dehydrogenases/reductases (SDR) family.,

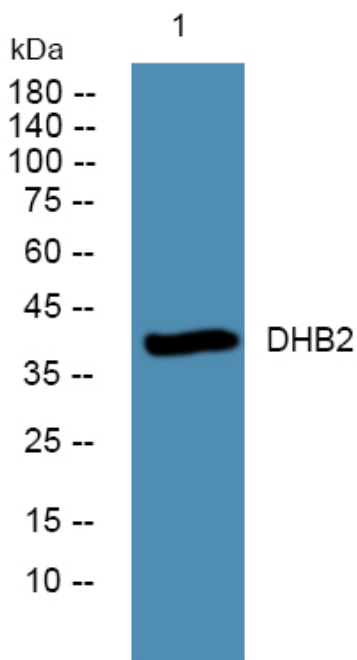
matters needing attention

Avoid repeated freezing and thawing!

Usage suggestions

This product can be used in immunological reaction related experiments. For more information, please consult technical personnel.

Products Images



Western blot analysis of lysates from SW480 cells, primary antibody was diluted at 1:1000, 4° over night