



NTHL1 Polyclonal Antibody

Catalog No	BYab-05572
Isotype	IgG
Reactivity	Human;Mouse
Applications	WB;ELISA
Gene Name	NTHL1 NTH1 OCTS3
Protein Name	Endonuclease III-like protein 1 (EC 4.2.99.18)
Immunogen	Synthesized peptide derived from part region of human protein
Specificity	NTHL1 Polyclonal Antibody detects endogenous levels of protein.
Formulation	Liquid in PBS containing 50% glycerol, and 0.02% sodium azide.
Source	Polyclonal, Rabbit,IgG
Purification	The antibody was affinity-purified from rabbit antiserum by affinity-chromatography using epitope-specific immunogen.
Dilution	WB 1:500-2000 ELISA 1:5000-20000
Concentration	1 mg/ml
Purity	≥90%
Storage Stability	-20°C/1 year
Synonyms	
Observed Band	34kD
Cell Pathway	Nucleus . Mitochondrion .
Tissue Specificity	Widely expressed with highest levels in heart and lowest levels in lung and liver.
Function	<p>catalytic activity:The C-O-P bond 3' to the apurinic or apyrimidinic site in DNA is broken by a beta-elimination reaction, leaving a 3'-terminal unsaturated sugar and a product with a terminal 5'-phosphate.,caution:It is uncertain whether Met-1, Met-9 or Met-16 is the initiator.,cofactor:Binds 1 4Fe-4S cluster. The cluster is not important for the catalytic activity, but which is probably involved in the proper positioning of the enzyme along the DNA strand.,developmental stage:Expression levels are regulated during the cell cycle with increased levels during early and mid S-phase.,function:Has both an apurinic and/or apyrimidinic endonuclease activity and a DNA N-glycosylase activity. Incises damaged DNA at cytosines, thymines and guanines. Acts on a damaged strand, 5' from the damaged site. Required for the repair of both oxidative DNA damage and spontaneous mutagenic lesions.,similari</p>

Nanjing BYabscience technology Co.,Ltd



Background

The protein encoded by this gene is a DNA N-glycosylase of the endonuclease III family. Like a similar protein in *E. coli*, the encoded protein has DNA glycosylase activity on DNA substrates containing oxidized pyrimidine residues and has apurinic/apyrimidinic lyase activity. [provided by RefSeq, Oct 2008],

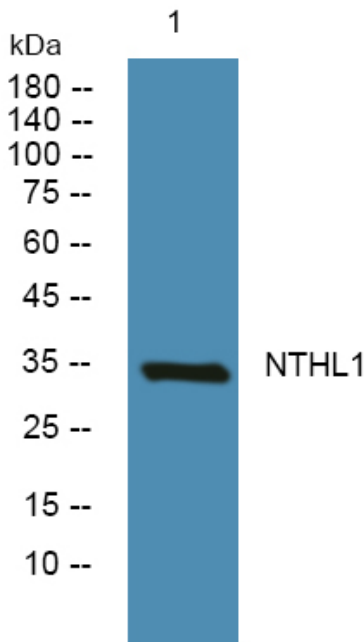
matters needing attention

Avoid repeated freezing and thawing!

Usage suggestions

This product can be used in immunological reaction related experiments. For more information, please consult technical personnel.

Products Images



Western blot analysis of lysates from SH-SY5Y cells, primary antibody was diluted at 1:1000, 4° over night