



RPAB3 Polyclonal Antibody

Catalog No	BYab-05542
Isotype	IgG
Reactivity	Human;Mouse
Applications	WB;ELISA
Gene Name	POLR2H
Protein Name	DNA-directed RNA polymerases I, II, and III subunit RPABC3 (RNA polymerases I, II, and III subunit ABC3) (DNA-directed RNA polymerase II subunit H) (DNA-directed RNA polymerases I, II, and III 17.1 kD)
Immunogen	Synthesized peptide derived from part region of human protein
Specificity	RPAB3 Polyclonal Antibody detects endogenous levels of protein.
Formulation	Liquid in PBS containing 50% glycerol, and 0.02% sodium azide.
Source	Polyclonal, Rabbit,IgG
Purification	The antibody was affinity-purified from rabbit antiserum by affinity-chromatography using epitope-specific immunogen.
Dilution	WB 1:500-2000 ELISA 1:5000-20000
Concentration	1 mg/ml
Purity	≥90%
Storage Stability	-20°C/1 year
Synonyms	
Observed Band	22kD
Cell Pathway	Nucleus, nucleolus .
Tissue Specificity	B-cell lymphoma,Cervix carcinoma,Placenta,
Function	function:DNA-dependent RNA polymerase catalyzes the transcription of DNA into RNA using the four ribonucleoside triphosphates as substrates. Common component of RNA polymerases I, II and III which synthesize ribosomal RNA precursors, mRNA precursors and many functional non-coding RNAs, and small RNAs, such as 5S rRNA and tRNAs, respectively.,similarity:Belongs to the eukaryotic RPB8 RNA polymerase subunit family.,subunit:Component of the RNA polymerase I (Pol I), RNA polymerase II (Pol II) and RNA polymerase III (Pol III) complexes consisting of at least 13, 12 and 17 subunits, respectively.,
Background	The three eukaryotic RNA polymerases are complex multisubunit enzymes that play a central role in the transcription of nuclear genes. This gene encodes an

Nanjing BYabscience technology Co.,Ltd



essential and highly conserved subunit of RNA polymerase II that is shared by the other two eukaryotic DNA-directed RNA polymerases, I and III. Alternative splicing results in multiple transcript variants of this gene. [provided by RefSeq, Jul 2013],

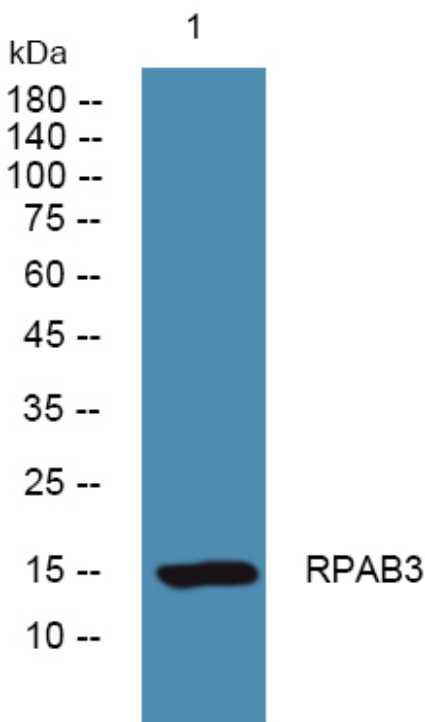
matters needing attention

Avoid repeated freezing and thawing!

Usage suggestions

This product can be used in immunological reaction related experiments. For more information, please consult technical personnel.

Products Images



Western blot analysis of lysates from DU145 cells, primary antibody was diluted at 1:1000, 4° over night