



PSF2 Polyclonal Antibody

Catalog No	BYab-05523
Isotype	IgG
Reactivity	Human;Mouse
Applications	WB;ELISA
Gene Name	GIN52 PSF2 CGI-122 DC5 HSPC037
Protein Name	DNA replication complex GINS protein PSF2 (GIN5 complex subunit 2)
Immunogen	Synthesized peptide derived from part region of human protein
Specificity	PSF2 Polyclonal Antibody detects endogenous levels of protein.
Formulation	Liquid in PBS containing 50% glycerol, and 0.02% sodium azide.
Source	Polyclonal, Rabbit,IgG
Purification	The antibody was affinity-purified from rabbit antiserum by affinity-chromatography using epitope-specific immunogen.
Dilution	WB 1:500-2000 ELISA 1:5000-20000
Concentration	1 mg/ml
Purity	≥90%
Storage Stability	-20°C/1 year
Synonyms	
Observed Band	20kD
Cell Pathway	Nucleus . Chromosome . Associates with chromatin. .
Tissue Specificity	Brain,Dendritic cell,Umbilical cord blood,
Function	function:The GINS complex plays an essential role in the initiation of DNA replication, and progression of DNA replication forks. GINS complex seems to bind preferentially to single-stranded DNA.,mass spectrometry:This is the measured mass for the GINS complex PubMed:17557111,PTM:Phosphorylated upon DNA damage, probably by ATM or ATR.,similarity:Belongs to the GINS2/PSF2 family.,subunit:Component of the GINS complex which is a heterotetramer of GINS1, GINS2, GINS3 and GINS4. Forms a stable subcomplex with GINS3. GINS complex interacts with DNA primase in vitro.,
Background	The yeast heterotetrameric GINS complex is made up of Sld5 (GINS4; MIM 610611), Psf1 (GINS1; MIM 610608), Psf2, and Psf3 (GINS3; MIM 610610). The formation of this complex is essential for the initiation of DNA replication in yeast

Nanjing BYabscience technology Co.,Ltd



and *Xenopus* egg extracts (Ueno et al., 2005 [PubMed 16287864]). See GINS1 for additional information about the GINS complex.[supplied by OMIM, Mar 2008],

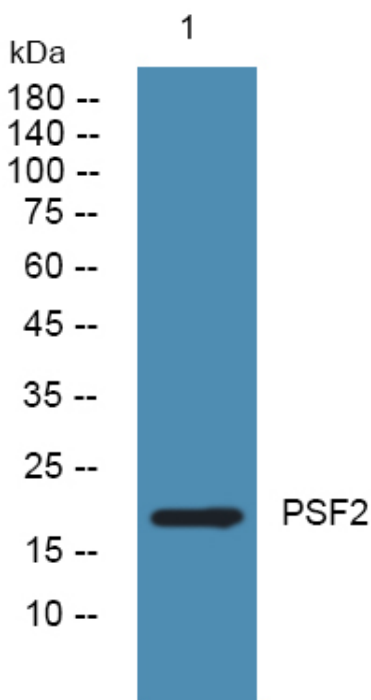
matters needing attention

Avoid repeated freezing and thawing!

Usage suggestions

This product can be used in immunological reaction related experiments. For more information, please consult technical personnel.

Products Images



Western blot analysis of lysates from A431 cells, primary antibody was diluted at 1:1000, 4° over night