



NCK1 Polyclonal Antibody

Catalog No	BYab-05504
Isotype	IgG
Reactivity	Human;Mouse
Applications	WB;ELISA
Gene Name	NCK1 NCK
Protein Name	Cytoplasmic protein NCK1 (NCK adaptor protein 1) (Nck-1) (SH2/SH3 adaptor protein NCK-alpha)
Immunogen	Synthesized peptide derived from part region of human protein
Specificity	NCK1 Polyclonal Antibody detects endogenous levels of protein.
Formulation	Liquid in PBS containing 50% glycerol, and 0.02% sodium azide.
Source	Polyclonal, Rabbit,IgG
Purification	The antibody was affinity-purified from rabbit antiserum by affinity-chromatography using epitope-specific immunogen.
Dilution	WB 1:500-2000 ELISA 1:5000-20000
Concentration	1 mg/ml
Purity	≥90%
Storage Stability	-20°C/1 year
Synonyms	
Observed Band	41kD
Cell Pathway	Cytoplasm. Endoplasmic reticulum. Nucleus. Mostly cytoplasmic, but shuttles between the cytoplasm and the nucleus. Import into the nucleus requires the interaction with SOCS7. Predominantly nuclear following genotoxic stresses, such as UV irradiation, hydroxyurea or mitomycin C treatments.
Tissue Specificity	Epithelium,Platelet,Uterus,
Function	function:Adapter protein which associates with tyrosine-phosphorylated growth factor receptors or their cellular substrates. Maintains low levels of EIF2S1 phosphorylation by promoting its dephosphorylation by PP1.,PTM:Phosphorylated on Ser and Tyr residues.,similarity:Contains 1 SH2 domain.,similarity:Contains 3 SH3 domains.,subunit:Associates with BLNK, PLCG1, VAV1 and NCK1 in a B-cell antigen receptor-dependent fashion. Interacts with SOCS7. Part of a complex containing PPP1R15B, PP1 and NCK1. Interacts with RALGPS1.,

Nanjing BYabscience technology Co.,Ltd



Background

The protein encoded by this gene is one of the signaling and transforming proteins containing Src homology 2 and 3 (SH2 and SH3) domains. It is located in the cytoplasm and is an adaptor protein involved in transducing signals from receptor tyrosine kinases to downstream signal recipients such as RAS. Alternatively spliced transcript variants encoding different isoforms have been found. [provided by RefSeq, Jun 2010],

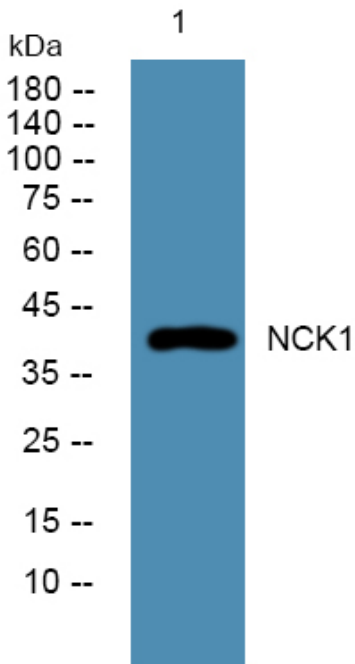
matters needing attention

Avoid repeated freezing and thawing!

Usage suggestions

This product can be used in immunological reaction related experiments. For more information, please consult technical personnel.

Products Images



Western blot analysis of lysates from DU145 cells, primary antibody was diluted at 1:1000, 4° over night