



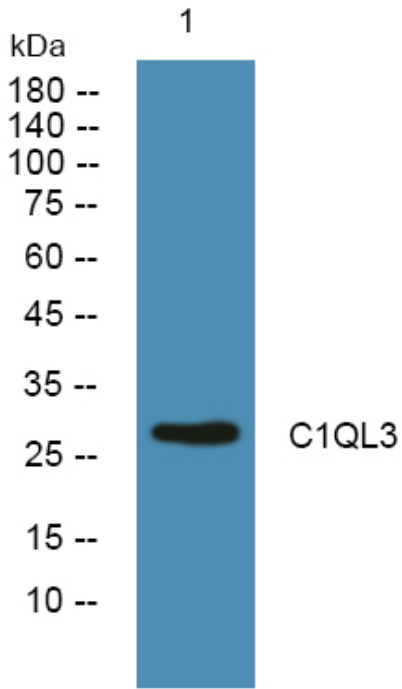
C1QL3 Polyclonal Antibody

Catalog No	BYab-05488
Isotype	IgG
Reactivity	Human;Mouse
Applications	WB;ELISA
Gene Name	C1QL3
Protein Name	Complement C1q-like protein 3
Immunogen	Synthesized peptide derived from part region of human protein AA range: 110-150
Specificity	C1QL3 Polyclonal Antibody detects endogenous levels of protein.
Formulation	Liquid in PBS containing 50% glycerol, and 0.02% sodium azide.
Source	Polyclonal, Rabbit,IgG
Purification	The antibody was affinity-purified from rabbit antiserum by affinity-chromatography using epitope-specific immunogen.
Dilution	WB 1:500-2000 ELISA 1:5000-20000
Concentration	1 mg/ml
Purity	≥90%
Storage Stability	-20°C/1 year
Synonyms	
Observed Band	28kD
Cell Pathway	Secreted .
Tissue Specificity	Highly expressed in adipose tissue, with expression levels at least 2 orders of magnitude higher than in other tissues, including brain and kidney.
Function	similarity:Contains 1 C1q domain.,similarity:Contains 1 collagen-like domain.,
Background	similarity:Contains 1 C1q domain.,similarity:Contains 1 collagen-like domain.,
matters needing attention	Avoid repeated freezing and thawing!
Usage suggestions	This product can be used in immunological reaction related experiments. For more information, please consult technical personnel.

Nanjing BYabscience technology Co.,Ltd



Products Images



Western blot analysis of lysates from SW480 cells,
primary antibody was diluted at 1:1000, 4° over night