



LC7L3 Polyclonal Antibody

Catalog No	BYab-05472
Isotype	IgG
Reactivity	Human;Mouse
Applications	WB;ELISA
Gene Name	LUC7L3 CREAP1 CROP O48
Protein Name	Luc7-like protein 3 (Cisplatin resistance-associated-overexpressed protein) (Luc7A) (Okadaic acid-inducible phosphoprotein OA48-18) (cAMP regulatory element-associated protein 1) (CRE-associated prote
Immunogen	Synthesized peptide derived from part region of human protein
Specificity	LC7L3 Polyclonal Antibody detects endogenous levels of protein.
Formulation	Liquid in PBS containing 50% glycerol, and 0.02% sodium azide.
Source	Polyclonal, Rabbit,IgG
Purification	The antibody was affinity-purified from rabbit antiserum by affinity-chromatography using epitope-specific immunogen.
Dilution	WB 1:500-2000 ELISA 1:5000-20000
Concentration	1 mg/ml
Purity	≥90%
Storage Stability	-20°C/1 year
Synonyms	
Observed Band	47kD
Cell Pathway	Nucleus speckle . The subnuclear localization is affected by cisplatin.
Tissue Specificity	Widely expressed. Highest levels in heart, brain, pancreas, thymus, ovary, small intestine and peripheral blood leukocytes, as well as cerebellum, putamen and pituitary gland. Lowest levels in lung, liver and kidney. Also expressed in fetal tissues, including brain, heart, kidney, thymus and lung.
Function	RNA processing, mRNA processing, apoptosis, cell death, RNA splicing, programmed cell death, mRNA metabolic process, death,
Background	This gene encodes a protein with an N-terminal half that contains cysteine/histidine motifs and leucine zipper-like repeats, and the C-terminal half is rich in arginine and glutamate residues (RE domain) and arginine and serine residues (RS domain). This protein localizes with a speckled pattern in the nucleus, and could be involved in the formation of spliceosome via the RE and RS domains. Two alternatively spliced transcript variants encoding the same protein

Nanjing BYabscience technology Co.,Ltd



have been found for this gene. [provided by RefSeq, Aug 2009],

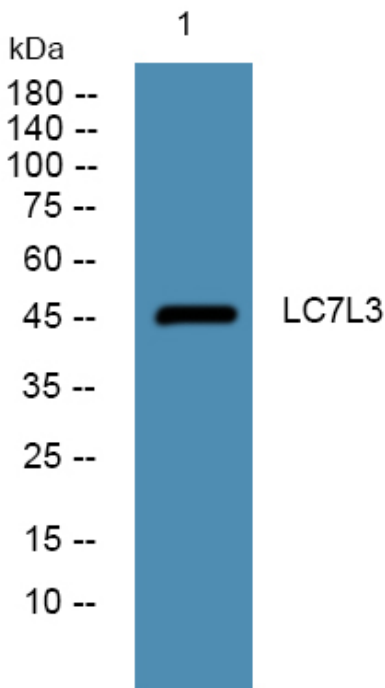
matters needing attention

Avoid repeated freezing and thawing!

Usage suggestions

This product can be used in immunological reaction related experiments. For more information, please consult technical personnel.

Products Images



Western blot analysis of lysates from SW480 cells, primary antibody was diluted at 1:1000, 4° over night