



# KIF4B Polyclonal Antibody

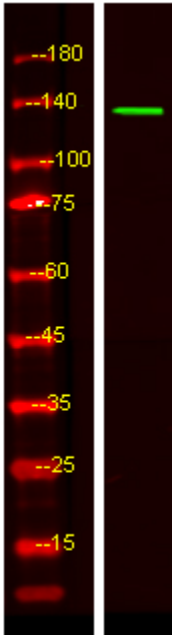
<b>Catalog No</b>	BYab-05470
<b>Isotype</b>	IgG
<b>Reactivity</b>	Human;Rat;Mouse;
<b>Applications</b>	WB;ELISA
<b>Gene Name</b>	KIF4B
<b>Protein Name</b>	Chromosome-associated kinesin KIF4B (Chromokinesin-B)
<b>Immunogen</b>	Synthesized peptide derived from part region of human protein
<b>Specificity</b>	KIF4B Polyclonal Antibody detects endogenous levels of protein.
<b>Formulation</b>	Liquid in PBS containing 50% glycerol, and 0.02% sodium azide.
<b>Source</b>	Polyclonal, Rabbit,IgG
<b>Purification</b>	The antibody was affinity-purified from rabbit antiserum by affinity-chromatography using epitope-specific immunogen.
<b>Dilution</b>	WB 1:500-2000 ELISA 1:5000-20000
<b>Concentration</b>	1 mg/ml
<b>Purity</b>	≥90%
<b>Storage Stability</b>	-20°C/1 year
<b>Synonyms</b>	
<b>Observed Band</b>	135kD
<b>Cell Pathway</b>	Nucleus matrix . Cytoplasm, cytoskeleton .
<b>Tissue Specificity</b>	Specifically expressed in testis.
<b>Function</b>	function:Motor protein that translocates PRC1 to the plus ends of interdigitating spindle microtubules during the metaphase to anaphase transition, an essential step for the formation of an organized central spindle midzone and midbody and for successful cytokinesis. May play a role in mitotic chromosomal positioning and bipolar spindle stabilization.,sequence caution:Contaminating sequence. Potential poly-A sequence.,similarity:Belongs to the kinesin-like protein family.,similarity:Belongs to the kinesin-like protein family. Chromokinesin subfamily.,similarity:Contains 1 kinesin-motor domain.,subcellular location:Not present in the nucleolus. In early mitosis, associated with the mitotic spindle, in anaphase, localized to the spindle midzone and, in telophase and cytokinesis, to the midbody. In late cytokinesis, found in the center of the midbody. Associated with chromosomes at all stag

Nanjing BYabscience technology Co.,Ltd



<b>Background</b>	kinesin family member 4B(KIF4B) Homo sapiens This gene is an intronless retrocopy of kinesin family member 4A. The protein encoded by this gene is a microtubule-based motor protein that plays vital roles in anaphase spindle dynamics and cytokinesis. [provided by RefSeq, Jul 2016],
<b>matters needing attention</b>	Avoid repeated freezing and thawing!
<b>Usage suggestions</b>	This product can be used in immunological reaction related experiments. For more information, please consult technical personnel.

## Products Images



Western Blot analysis of HEK293 lysis, using primary antibody at 1:1000 dilution. Secondary antibody(catalog#:RS23920) was diluted at 1:10000