



# CHD6 Polyclonal Antibody

<b>Catalog No</b>	BYab-05467
<b>Isotype</b>	IgG
<b>Reactivity</b>	Human;Rat;Mouse;
<b>Applications</b>	IHC;IF
<b>Gene Name</b>	CHD6 CHD5 KIAA1335 RIGB
<b>Protein Name</b>	Chromodomain-helicase-DNA-binding protein 6 (CHD-6) (EC 3.6.4.12) (ATP-dependent helicase CHD6) (Radiation-induced gene B protein)
<b>Immunogen</b>	Synthesized peptide derived from part region of human protein
<b>Specificity</b>	CHD6 Polyclonal Antibody detects endogenous levels of protein.
<b>Formulation</b>	Liquid in PBS containing 50% glycerol, and 0.02% sodium azide.
<b>Source</b>	Polyclonal, Rabbit,IgG
<b>Purification</b>	The antibody was affinity-purified from rabbit antiserum by affinity-chromatography using epitope-specific immunogen.
<b>Dilution</b>	IHC-p 1:50-300. IF 1:50-200
<b>Concentration</b>	1 mg/ml
<b>Purity</b>	≥90%
<b>Storage Stability</b>	-20°C/1 year
<b>Synonyms</b>	
<b>Observed Band</b>	298kD
<b>Cell Pathway</b>	Nucleus, nucleoplasm . Enriched at sites of mRNA synthesis (PubMed:17027977). During influenza A virus infection, localizes to inactive chromatin. .
<b>Tissue Specificity</b>	Widely expressed.
<b>Function</b>	function:Probable transcription regulator.,PTM:Phosphorylated upon DNA damage, probably by ATM or ATR.,sequence caution:The sequence differs from position 1528 onward for unknown reasons.,similarity:Belongs to the SNF2/RAD54 helicase family.,similarity:Contains 1 helicase ATP-binding domain.,similarity:Contains 1 helicase C-terminal domain.,similarity:Contains 2 chromo domains.,tissue specificity:Ubiquitous.,
<b>Background</b>	This gene encodes a member of the SNF2/RAD54 helicase protein family. The encoded protein contains two chromodomains, a helicase domain, and an ATPase domain. Several multi-subunit protein complexes remodel chromatin to allow patterns of cell type-specific gene expression, and the encoded protein is

Nanjing BYabscience technology Co.,Ltd



thought to be a core member of one or more of these chromatin remodeling complexes. The encoded protein may function as a transcriptional repressor and is involved in the cellular repression of influenza virus replication. [provided by RefSeq, Jul 2013],

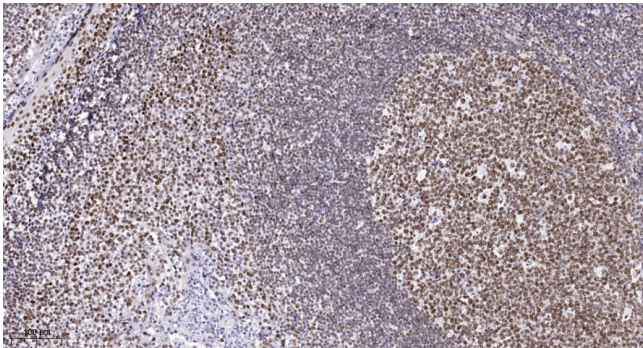
**matters needing attention**

Avoid repeated freezing and thawing!

**Usage suggestions**

This product can be used in immunological reaction related experiments. For more information, please consult technical personnel.

## Products Images



Immunohistochemical analysis of paraffin-embedded human tonsil. 1, Antibody was diluted at 1:200(4° overnight). 2, Tris-EDTA,pH9.0 was used for antigen retrieval. 3,Secondary antibody was diluted at 1:200(room temperature, 45min).