



PDE2A Polyclonal Antibody

Catalog No	BYab-05456
Isotype	IgG
Reactivity	Human;Mouse;Rat
Applications	WB;ELISA
Gene Name	PDE2A
Protein Name	cGMP-dependent 3',5'-cyclic phosphodiesterase (EC 3.1.4.17) (Cyclic GMP-stimulated phosphodiesterase) (CGS-PDE) (cGSPDE)
Immunogen	Synthesized peptide derived from part region of human protein
Specificity	PDE2A Polyclonal Antibody detects endogenous levels of protein.
Formulation	Liquid in PBS containing 50% glycerol, and 0.02% sodium azide.
Source	Polyclonal, Rabbit,IgG
Purification	The antibody was affinity-purified from rabbit antiserum by affinity-chromatography using epitope-specific immunogen.
Dilution	WB 1:500-2000 ELISA 1:5000-20000
Concentration	1 mg/ml
Purity	≥90%
Storage Stability	-20°C/1 year
Synonyms	
Observed Band	103kD
Cell Pathway	[Isoform PDE2A3]: Cell membrane ; Lipid-anchor .; [Isoform PDE2A2]: Mitochondrion matrix . Mitochondrion inner membrane . Mitochondrion outer membrane .; [Isoform PDE2A1]: Cytoplasm .; [Isoform 5]: Mitochondrion .
Tissue Specificity	Widely expressed (PubMed:9210593, PubMed:29392776). Expressed in brain, with high expression observed in the corpus striatum (PubMed:29392776). Also expressed in heart, placenta, lung, skeletal muscle, kidney and pancreas (PubMed:9210593, PubMed:29392776).
Function	alternative products:Additional isoforms seem to exist. Experimental confirmation may be lacking for some isoforms,catalytic activity:Nucleoside 3',5'-cyclic phosphate + H(2)O = nucleoside 5'-phosphate.,function:Hydrolyzes both cyclic AMP (cAMP) and cyclic GMP (cGMP).,similarity:Belongs to the cyclic nucleotide phosphodiesterase family.,similarity:Contains 2 GAF domains.,subunit:Homodimer.,tissue specificity:Expressed in brain and to a lesser extent in heart, placenta, lung, skeletal muscle, kidney and pancreas.,

Nanjing BYabscience technology Co.,Ltd



Background

alternative products:Additional isoforms seem to exist. Experimental confirmation may be lacking for some isoforms,catalytic activity:Nucleoside 3',5'-cyclic phosphate + H(2)O = nucleoside 5'-phosphate.,function:Hydrolyzes both cyclic AMP (cAMP) and cyclic GMP (cGMP).,similarity:Belongs to the cyclic nucleotide phosphodiesterase family.,similarity:Contains 2 GAF domains.,subunit:Homodimer.,tissue specificity:Expressed in brain and to a lesser extent in heart, placenta, lung, skeletal muscle, kidney and pancreas.,

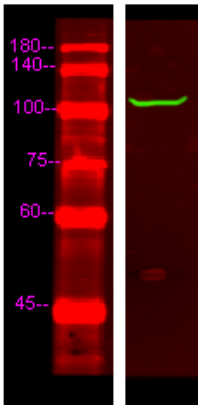
matters needing attention

Avoid repeated freezing and thawing!

Usage suggestions

This product can be used in immunological reaction related experiments. For more information, please consult technical personnel.

Products Images



Western Blot analysis of HeLa lysis, using primary antibody at 1:1000 dilution. Secondary antibody(catalog#:RS23920) was diluted at 1:10000