



BORG5 Polyclonal Antibody

Catalog No	BYab-05445
Isotype	IgG
Reactivity	Human;Rat;Mouse;
Applications	WB;ELISA
Gene Name	CDC42EP1 BORG5 CEP1 MSE55
Protein Name	Cdc42 effector protein 1 (Binder of Rho GTPases 5) (Serum protein MSE55)
Immunogen	Synthesized peptide derived from part region of human protein
Specificity	BORG5 Polyclonal Antibody detects endogenous levels of protein.
Formulation	Liquid in PBS containing 50% glycerol, and 0.02% sodium azide.
Source	Polyclonal, Rabbit,IgG
Purification	The antibody was affinity-purified from rabbit antiserum by affinity-chromatography using epitope-specific immunogen.
Dilution	WB 1:500-2000 ELISA 1:5000-20000
Concentration	1 mg/ml
Purity	≥90%
Storage Stability	-20°C/1 year
Synonyms	
Observed Band	43kD
Cell Pathway	Endomembrane system ; Peripheral membrane protein . Cytoplasm, cytoskeleton
Tissue Specificity	Endothelial and bone marrow stromal cells.
Function	domain:The CRIB domain mediates interaction with CDC42.,function:Probably involved in the organization of the actin cytoskeleton. Induced membrane extensions in fibroblasts.,similarity:Belongs to the BORG/CEP family.,similarity:Contains 1 CRIB domain.,subunit:Interacts with RHOQ and CDC42, in a GTP-dependent manner.,tissue specificity:Endothelial and bone marrow stromal cells.,
Background	CDC42 is a member of the Rho GTPase family that regulates multiple cellular activities, including actin polymerization. The protein encoded by this gene is a CDC42 binding protein that mediates actin cytoskeleton reorganization at the plasma membrane. This protein is secreted and is primarily found in bone marrow. [provided by RefSeq, Jul 2008],

Nanjing BYabscience technology Co.,Ltd



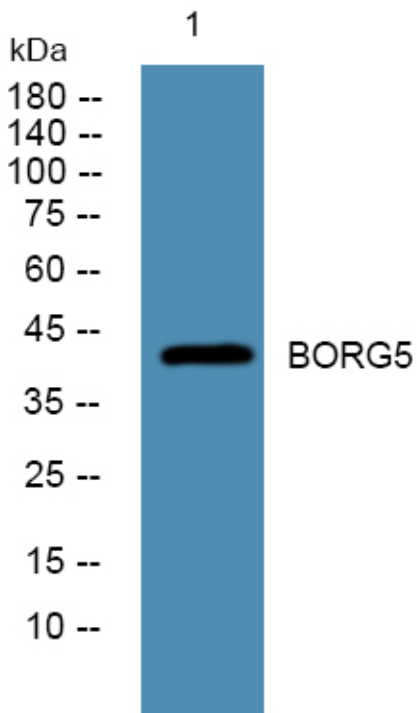
matters needing attention

Avoid repeated freezing and thawing!

Usage suggestions

This product can be used in immunological reaction related experiments. For more information, please consult technical personnel.

Products Images



Western blot analysis of lysates from U2OS cells, primary antibody was diluted at 1:1000, 4° over night