



MPRD Polyclonal Antibody

Catalog No	BYab-05443
Isotype	IgG
Reactivity	Human;Mouse;Rat
Applications	WB;ELISA
Gene Name	M6PR MPR46 MPRD
Protein Name	Cation-dependent mannose-6-phosphate receptor (CD Man-6-P receptor) (CD-MPR) (46 kDa mannose 6-phosphate receptor) (MPR 46)
Immunogen	Synthesized peptide derived from part region of human protein
Specificity	MPRD Polyclonal Antibody detects endogenous levels of protein.
Formulation	Liquid in PBS containing 50% glycerol, and 0.02% sodium azide.
Source	Polyclonal, Rabbit,IgG
Purification	The antibody was affinity-purified from rabbit antiserum by affinity-chromatography using epitope-specific immunogen.
Dilution	WB 1:500-2000 ELISA 1:5000-20000
Concentration	1 mg/ml
Purity	≥90%
Storage Stability	-20°C/1 year
Synonyms	
Observed Band	30kD
Cell Pathway	Lysosome membrane; Single-pass type I membrane protein.
Tissue Specificity	Leukocyte,Liver,Muscle,Uterus,
Function	domain:The extracellular domain is homologous to the repeating units (of approximately 147 AA) of the cation-independent mannose 6-phosphate receptor.,function:Transport of phosphorylated lysosomal enzymes from the Golgi complex and the cell surface to lysosomes. Lysosomal enzymes bearing phosphomannosyl residues bind specifically to mannose-6-phosphate receptors in the Golgi apparatus and the resulting receptor-ligand complex is transported to an acidic prelysosomal compartment where the low pH mediates the dissociation of the complex.,miscellaneous:This receptor has optimal binding in the presence of divalent cations.,subunit:Homodimer. Binds GGA1, GGA2 and GGA3.,
Background	This gene encodes a member of the P-type lectin family. P-type lectins play a critical role in lysosome function through the specific transport of

Nanjing BYabscience technology Co.,Ltd



mannose-6-phosphate-containing acid hydrolases from the Golgi complex to lysosomes. The encoded protein functions as a homodimer and requires divalent cations for ligand binding. Alternatively spliced transcript variants encoding multiple isoforms have been observed for this gene. A pseudogene of this gene is located on the long arm of chromosome X. [provided by RefSeq, May 2011],

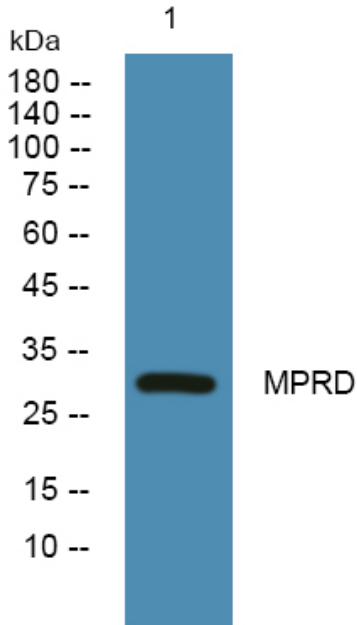
matters needing attention

Avoid repeated freezing and thawing!

Usage suggestions

This product can be used in immunological reaction related experiments. For more information, please consult technical personnel.

Products Images



Western blot analysis of lysates from DU145 cells, primary antibody was diluted at 1:1000, 4° over night