



CTSR3 Polyclonal Antibody

Catalog No	BYab-05439
Isotype	IgG
Reactivity	Human;Rat;Mouse;
Applications	WB;ELISA
Gene Name	CATSPER3
Protein Name	Cation channel sperm-associated protein 3 (CatSper3) (Ca(v)-like protein) (One-repeat calcium channel-like protein)
Immunogen	Synthesized peptide derived from part region of human protein
Specificity	CTSR3 Polyclonal Antibody detects endogenous levels of protein.
Formulation	Liquid in PBS containing 50% glycerol, and 0.02% sodium azide.
Source	Polyclonal, Rabbit,IgG
Purification	The antibody was affinity-purified from rabbit antiserum by affinity-chromatography using epitope-specific immunogen.
Dilution	WB 1:500-2000 ELISA 1:5000-20000
Concentration	1 mg/ml
Purity	≥90%
Storage Stability	-20°C/1 year
Synonyms	
Observed Band	43kD
Cell Pathway	Cell projection, cilium, flagellum membrane ; Multi-pass membrane protein .
Tissue Specificity	Testis-specific.
Function	function:Voltage-gated calcium channel that plays a central role in sperm cell hyperactivation. Controls calcium entry to mediate the hyperactivated motility, a step needed for sperm motility which is essential late in the preparation of sperm for fertilization. Activated by intracellular alkalinization.,similarity:Belongs to the cation channel sperm-associated family.,subunit:Heterotetramer; possibly composed of CATSPER1, CATSPER2, CATSPER3 and CATSPER4 (Potential). Interacts with CATSPER1.,tissue specificity:Testis-specific. Specifically present in the principal piece of sperm tail.,
Background	function:Voltage-gated calcium channel that plays a central role in sperm cell hyperactivation. Controls calcium entry to mediate the hyperactivated motility, a step needed for sperm motility which is essential late in the preparation of sperm

Nanjing BYabscience technology Co.,Ltd



for fertilization. Activated by intracellular alkalinization.,similarity:Belongs to the cation channel sperm-associated family.,subunit:Heterotetramer; possibly composed of CATSPER1, CATSPER2, CATSPER3 and CATSPER4 (Potential). Interacts with CATSPER1.,tissue specificity:Testis-specific. Specifically present in the principal piece of sperm tail.,

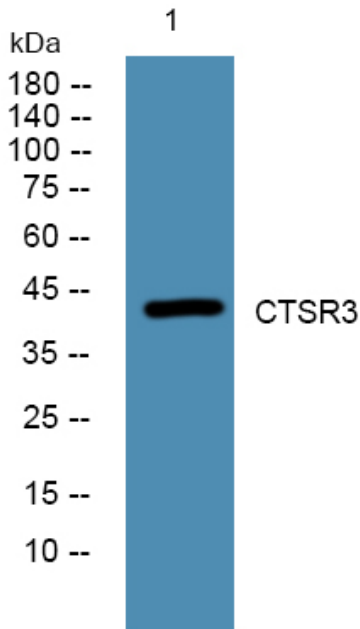
matters needing attention

Avoid repeated freezing and thawing!

Usage suggestions

This product can be used in immunological reaction related experiments. For more information, please consult technical personnel.

Products Images



Western blot analysis of lysates from A431 cells, primary antibody was diluted at 1:1000, 4° over night