



CEA20 Polyclonal Antibody

Catalog No	BYab-05434
Isotype	IgG
Reactivity	Human;Rat;Mouse;
Applications	WB;ELISA
Gene Name	CEACAM20 UNQ9366/PRO34155
Protein Name	Carcinoembryonic antigen-related cell adhesion molecule 20
Immunogen	Synthesized peptide derived from part region of human protein
Specificity	CEA20 Polyclonal Antibody detects endogenous levels of protein.
Formulation	Liquid in PBS containing 50% glycerol, and 0.02% sodium azide.
Source	Polyclonal, Rabbit,IgG
Purification	The antibody was affinity-purified from rabbit antiserum by affinity-chromatography using epitope-specific immunogen.
Dilution	WB 1:500-2000 ELISA 1:5000-20000
Concentration	1 mg/ml
Purity	≥90%
Storage Stability	-20°C/1 year
Synonyms	
Observed Band	64kD
Cell Pathway	Cell projection, microvillus membrane ; Single-pass type I membrane protein . Apical cell membrane ; Single-pass type I membrane protein . Colocalizes with PTPRH and CEACAM1 at the apical brush border of intestinal cells.
Tissue Specificity	Small intestine,
Function	similarity:Belongs to the immunoglobulin superfamily. CEA family.,similarity:Contains 4 Ig-like C2-type (immunoglobulin-like) domains.,
Background	similarity:Belongs to the immunoglobulin superfamily. CEA family.,similarity:Contains 4 Ig-like C2-type (immunoglobulin-like) domains.,
matters needing attention	Avoid repeated freezing and thawing!

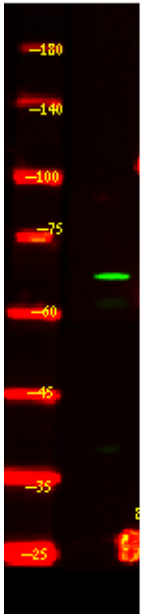
Nanjing BYabscience technology Co.,Ltd



Usage suggestions

This product can be used in immunological reaction related experiments. For more information, please consult technical personnel.

Products Images



Western Blot analysis of HEK293 lysis, using primary antibody at 1:1000 dilution. Secondary antibody(catalog#:RS23920) was diluted at 1:10000