



CEA19 Polyclonal Antibody

Catalog No	BYab-05433
Isotype	IgG
Reactivity	Human;Rat;Mouse;
Applications	WB;ELISA
Gene Name	CEACAM19 CEAL1 UNQ2973/PRO7436
Protein Name	Carcinoembryonic antigen-related cell adhesion molecule 19 (Carcinoembryonic antigen-like 1)
Immunogen	Synthesized peptide derived from part region of human protein
Specificity	CEA19 Polyclonal Antibody detects endogenous levels of protein.
Formulation	Liquid in PBS containing 50% glycerol, and 0.02% sodium azide.
Source	Polyclonal, Rabbit,IgG
Purification	The antibody was affinity-purified from rabbit antiserum by affinity-chromatography using epitope-specific immunogen.
Dilution	WB 1:500-2000 ELISA 1:5000-20000
Concentration	1 mg/ml
Purity	≥90%
Storage Stability	-20°C/1 year
Synonyms	
Observed Band	33kD
Cell Pathway	Membrane ; Single-pass type I membrane protein .
Tissue Specificity	Ubiquitous with highest expression in prostate, uterus, fetal brain, mammary gland, adrenal gland, skeletal muscle, small intestine, and kidney, and lower expression in lung, cerebellum, testis, liver, pancreas, bone marrow and ovary.
Function	induction:Down-regulated by dexamethasone (in vitro).,similarity:Belongs to the immunoglobulin superfamily. CEA family.,tissue specificity:Ubiquitous with highest expression in prostate, uterus, fetal brain, mammary gland, adrenal gland, skeletal muscle, small intestine, and kidney, and lower expression in lung, cerebellum, testis, liver, pancreas, bone marrow and ovary.,
Background	induction:Down-regulated by dexamethasone (in vitro).,similarity:Belongs to the immunoglobulin superfamily. CEA family.,tissue specificity:Ubiquitous with highest expression in prostate, uterus, fetal brain, mammary gland, adrenal gland, skeletal muscle, small intestine, and kidney, and lower expression in lung, cerebellum, testis, liver, pancreas, bone marrow and ovary.,

Nanjing BYabscience technology Co.,Ltd



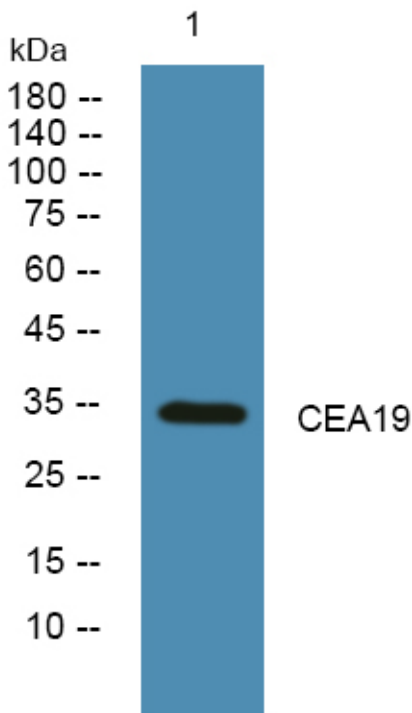
matters needing attention

Avoid repeated freezing and thawing!

Usage suggestions

This product can be used in immunological reaction related experiments. For more information, please consult technical personnel.

Products Images



Western blot analysis of lysates from K562 cells, primary antibody was diluted at 1:1000, 4° over night