



# CEA16 Polyclonal Antibody

<b>Catalog No</b>	BYab-05432
<b>Isotype</b>	IgG
<b>Reactivity</b>	Human;Mouse
<b>Applications</b>	WB;ELISA
<b>Gene Name</b>	CEACAM16 CEAL2
<b>Protein Name</b>	Carcinoembryonic antigen-related cell adhesion molecule 16 (Carcinoembryonic antigen-like 2)
<b>Immunogen</b>	Synthesized peptide derived from part region of human protein
<b>Specificity</b>	CEA16 Polyclonal Antibody detects endogenous levels of protein.
<b>Formulation</b>	Liquid in PBS containing 50% glycerol, and 0.02% sodium azide.
<b>Source</b>	Polyclonal, Rabbit,IgG
<b>Purification</b>	The antibody was affinity-purified from rabbit antiserum by affinity-chromatography using epitope-specific immunogen.
<b>Dilution</b>	WB 1:500-2000 ELISA 1:5000-20000
<b>Concentration</b>	1 mg/ml
<b>Purity</b>	≥90%
<b>Storage Stability</b>	-20°C/1 year
<b>Synonyms</b>	
<b>Observed Band</b>	46kD
<b>Cell Pathway</b>	Secreted . Localizes to the tip of cochlear outer hair cells and to the tectorial membrane. .
<b>Tissue Specificity</b>	
<b>Function</b>	similarity:Belongs to the immunoglobulin superfamily. CEA family.,similarity:Contains 2 Ig-like C2-type (immunoglobulin-like) domains.,
<b>Background</b>	The protein encoded by this gene is a secreted glycoprotein that in mouse interacts with tectorial membrane proteins in the inner ear. The encoded adhesion protein is found in cochlear outer hair cells and appears to be important for proper hearing over an extended frequency range. Defects in this gene likely are a cause of non-syndromic autosomal dominant hearing loss. [provided by RefSeq, May 2012],
<b>matters needing attention</b>	Avoid repeated freezing and thawing!

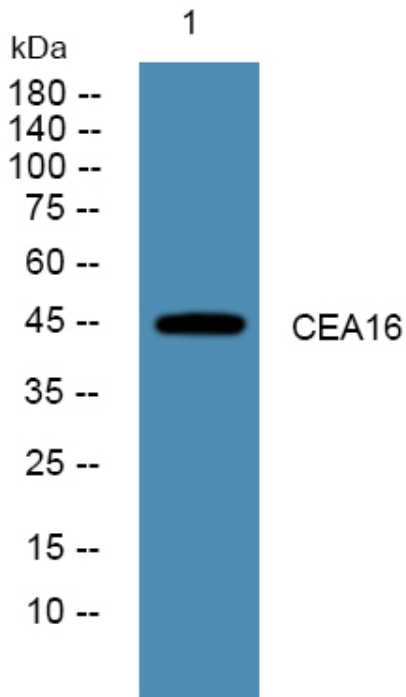
Nanjing BYabscience technology Co.,Ltd



### Usage suggestions

This product can be used in immunological reaction related experiments. For more information, please consult technical personnel.

## Products Images



Western blot analysis of lysates from SH-SY5Y cells, primary antibody was diluted at 1:1000, 4° over night