



# CBPB1 Polyclonal Antibody

<b>Catalog No</b>	BYab-05429
<b>Isotype</b>	IgG
<b>Reactivity</b>	Human;Rat;Mouse;
<b>Applications</b>	WB;ELISA
<b>Gene Name</b>	CPB1 CPB PCPB
<b>Protein Name</b>	Carboxypeptidase B (EC 3.4.17.2) (Pancreas-specific protein) (PASP)
<b>Immunogen</b>	Synthesized peptide derived from part region of human protein
<b>Specificity</b>	CBPB1 Polyclonal Antibody detects endogenous levels of protein.
<b>Formulation</b>	Liquid in PBS containing 50% glycerol, and 0.02% sodium azide.
<b>Source</b>	Polyclonal, Rabbit,IgG
<b>Purification</b>	The antibody was affinity-purified from rabbit antiserum by affinity-chromatography using epitope-specific immunogen.
<b>Dilution</b>	WB 1:500-2000 ELISA 1:5000-20000
<b>Concentration</b>	1 mg/ml
<b>Purity</b>	≥90%
<b>Storage Stability</b>	-20°C/1 year
<b>Synonyms</b>	
<b>Observed Band</b>	45kD
<b>Cell Pathway</b>	Secreted . Zymogen granule lumen .
<b>Tissue Specificity</b>	Pancreas.
<b>Function</b>	catalytic activity:Preferential release of a C-terminal lysine or arginine amino acid.,cofactor:Binds 1 zinc ion per subunit.,similarity:Belongs to the peptidase M14 family.,tissue specificity:Pancreas.,
<b>Background</b>	Three different procarboxypeptidases A and two different procarboxypeptidases B have been isolated. The B1 and B2 forms differ from each other mainly in isoelectric point. Carboxypeptidase B1 is a highly tissue-specific protein and is a useful serum marker for acute pancreatitis and dysfunction of pancreatic transplants. It is not elevated in pancreatic carcinoma. [provided by RefSeq, Jul 2008],

Nanjing BYabscience technology Co.,Ltd



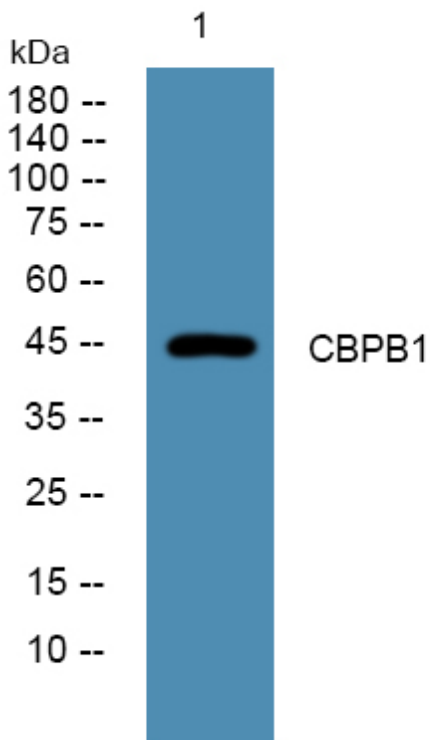
**matters needing attention**

Avoid repeated freezing and thawing!

**Usage suggestions**

This product can be used in immunological reaction related experiments. For more information, please consult technical personnel.

## Products Images



Western blot analysis of lysates from HCT116 cells, primary antibody was diluted at 1:1000, 4° over night

Nanjing BYabscience technology Co.,Ltd

网址: [www.njbybio.com](http://www.njbybio.com)

官方热线: 025-5229-8998

监督电话: 15950492658