



CBPA4 Polyclonal Antibody

Catalog No	BYab-05427
Isotype	IgG
Reactivity	Human;Mouse
Applications	WB;ELISA
Gene Name	CPA4 CPA3 UNQ694/PRO1339
Protein Name	Carboxypeptidase A4 (EC 3.4.17.-) (Carboxypeptidase A3)
Immunogen	Synthesized peptide derived from part region of human protein
Specificity	CBPA4 Polyclonal Antibody detects endogenous levels of protein.
Formulation	Liquid in PBS containing 50% glycerol, and 0.02% sodium azide.
Source	Polyclonal, Rabbit,IgG
Purification	The antibody was affinity-purified from rabbit antiserum by affinity-chromatography using epitope-specific immunogen.
Dilution	WB 1:500-2000 ELISA 1:5000-20000
Concentration	1 mg/ml
Purity	≥90%
Storage Stability	-20°C/1 year
Synonyms	
Observed Band	46kD
Cell Pathway	Secreted .
Tissue Specificity	Fetal expression in the adrenal gland, brain, heart, intestine, kidney, liver and lung. Except for fetal brain that shows no imprinting, expression was found preferentially from the maternal allele.
Function	cofactor: Binds 1 zinc ion per subunit.,function: Metalloprotease that could be involved in the histone hyperacetylation pathway.,induction: Up-regulated by inhibitors of histone dacencylation.,similarity: Belongs to the peptidase M14 family.,subunit: Interacts with LXN.,tissue specificity: Fetal expression in the adrenal gland, brain, heart, intestine, kidney, liver and lung. Except for fetal brain that shows no imprinting, expression was found preferentially from the maternal allele.,
Background	This gene is a member of the carboxypeptidase A/B subfamily, and it is located in a cluster with three other family members on chromosome 7. Carboxypeptidases are zinc-containing exopeptidases that catalyze the release of

Nanjing BYabscience technology Co.,Ltd



carboxy-terminal amino acids, and are synthesized as zymogens that are activated by proteolytic cleavage. This gene could be involved in the histone hyperacetylation pathway. It is imprinted and may be a strong candidate gene for prostate cancer aggressiveness. [provided by RefSeq, Jul 2008],

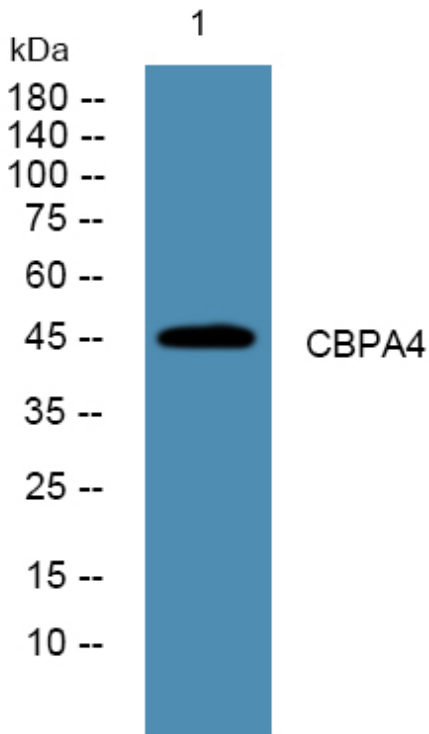
matters needing attention

Avoid repeated freezing and thawing!

Usage suggestions

This product can be used in immunological reaction related experiments. For more information, please consult technical personnel.

Products Images



Western blot analysis of lysates from SH-SY5Y cells, primary antibody was diluted at 1:1000, 4° over night