



CHST5 Polyclonal Antibody

Catalog No	BYab-05422
Isotype	IgG
Reactivity	Human;Rat;Mouse;
Applications	WB;ELISA
Gene Name	CHST5
Protein Name	Carbohydrate sulfotransferase 5 (EC 2.8.2.-) (Galactose/N-acetylglucosamine/N-acetylglucosamine 6-O-sulfotransferase 4-alpha) (GST4-alpha) (Intestinal N-acetylglucosamine-6-O-sulfotransferase) (I-GlcN
Immunogen	Synthesized peptide derived from part region of human protein
Specificity	CHST5 Polyclonal Antibody detects endogenous levels of protein.
Formulation	Liquid in PBS containing 50% glycerol, and 0.02% sodium azide.
Source	Polyclonal, Rabbit,IgG
Purification	The antibody was affinity-purified from rabbit antiserum by affinity-chromatography using epitope-specific immunogen.
Dilution	WB 1:500-2000 ELISA 1:5000-20000
Concentration	1 mg/ml
Purity	≥90%
Storage Stability	-20°C/1 year
Synonyms	
Observed Band	45kD
Cell Pathway	Golgi apparatus membrane ; Single-pass type II membrane protein . Golgi membrane, early secretory pathway.
Tissue Specificity	Predominantly expressed in small and large intestines and colon. Weakly expressed in lymphocytes. Not expressed in other tissues. Down-regulated in colonic adenocarcinomas.
Function	function:Catalyzes the transfer of sulfate to position 6 of non-reducing N-acetylglucosamine (GlcNAc) residues and O-linked sugars of mucin-type acceptors. Acts on the non-reducing terminal GlcNAc of short carbohydrate substrates. However, it does not transfer sulfate to longer carbohydrate substrates that have poly-N-acetyllactosamine structures. Has no activity toward keratan. Not involved in generating HEV-expressed ligands for L-selectin. Its substrate specificity may be influenced by its subcellular location.,online information:GlycoGene database,similarity:Belongs to the sulfotransferase 1

Nanjing BYabscience technology Co.,Ltd



family. Gal/GlcNAc/GalNAc subfamily.,subcellular location:Golgi membrane, early secretory pathway.,tissue specificity:Predominantly expressed in small and large intestines and colon. Weakly expressed in lymphocytes. Not expressed in other tissues. Down-regulated in colonic adenocarcinomas.,

Background

The protein encoded by this gene belongs to the Gal/GalNAc/GlcNAc 6-O-sulfotransferase (GST) family, members of which catalyze the transfer of sulfate to position 6 of galactose (Gal), N-acetylgalactosamine (GalNAc), or N-acetylglucosamine (GlcNAc) residues within proteoglycans, and sulfation of O-linked sugars of mucin-type acceptors. Carbohydrate sulfation plays a critical role in many biologic processes. This gene is predominantly expressed in colon and small intestine. [provided by RefSeq, Aug 2011],

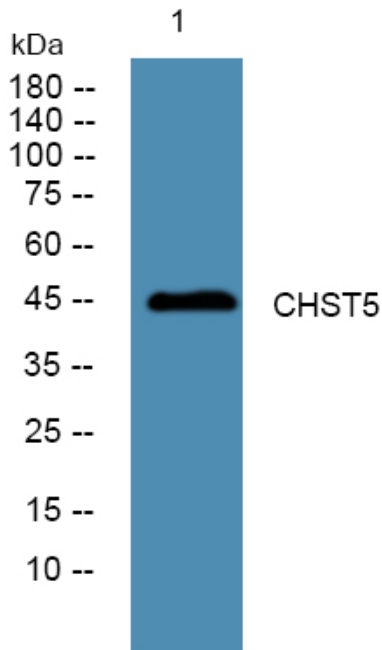
matters needing attention

Avoid repeated freezing and thawing!

Usage suggestions

This product can be used in immunological reaction related experiments. For more information, please consult technical personnel.

Products Images



Western blot analysis of lysates from Jarkat cells, primary antibody was diluted at 1:1000, 4° over night