



CTAG2 Polyclonal Antibody

Catalog No	BYab-05418
Isotype	IgG
Reactivity	Human;Rat;Mouse;
Applications	WB;ELISA
Gene Name	CTAG2 ESO2 LAGE1
Protein Name	Cancer/testis antigen 2 (CT2) (Autoimmunogenic cancer/testis antigen NY-ESO-2) (Cancer/testis antigen 6.2) (CT6.2) (L antigen family member 1) (LAGE-1)
Immunogen	Synthesized peptide derived from part region of human protein
Specificity	CTAG2 Polyclonal Antibody detects endogenous levels of protein.
Formulation	Liquid in PBS containing 50% glycerol, and 0.02% sodium azide.
Source	Polyclonal, Rabbit,IgG
Purification	The antibody was affinity-purified from rabbit antiserum by affinity-chromatography using epitope-specific immunogen.
Dilution	WB 1:500-2000 ELISA 1:5000-20000
Concentration	1 mg/ml
Purity	≥90%
Storage Stability	-20°C/1 year
Synonyms	
Observed Band	23kD
Cell Pathway	centrosome,
Tissue Specificity	Testis and very low level in placenta and in some uterus samples. Observed in 25-50% of tumor samples of melanomas, non-small-cell lung carcinomas, bladder, prostate and head and neck cancers.
Function	domain:A transmembrane domain is present in isoform LAGE-1A.,similarity:Belongs to the CTAG family.,tissue specificity:Testis and very low level in placenta and in some uterus samples. Observed in 25-50% of tumor samples of melanomas, non-small-cell lung carcinomas, bladder, prostate and head and neck cancers.,
Background	This gene encodes an autoimmunogenic tumor antigen that belongs to the ESO/LAGE family of cancer-testis antigens. This protein is expressed in a wide array of cancers including melanoma, breast cancer, bladder cancer and prostate cancer. This protein is also expressed in normal testis tissue. An alternative open

Nanjing BYabscience technology Co.,Ltd



reading frame product of this gene has been described in PMID:10399963. This alternate protein, termed CAMEL, is a tumor antigen that is recognized by melanoma-specific cytotoxic T-lymphocytes. Alternate splicing results in multiple transcript variants. [provided by RefSeq, Sep 2013],

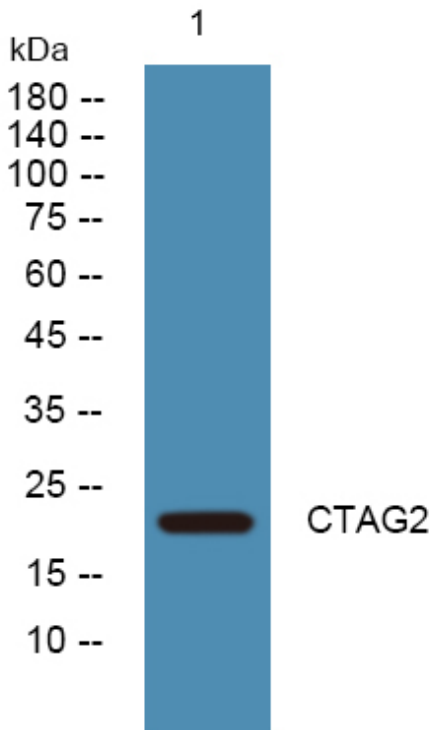
matters needing attention

Avoid repeated freezing and thawing!

Usage suggestions

This product can be used in immunological reaction related experiments. For more information, please consult technical personnel.

Products Images



Western blot analysis of lysates from DU145 cells, primary antibody was diluted at 1:1000, 4° over night