



CNN3 Polyclonal Antibody

Catalog No	BYab-05415
Isotype	IgG
Reactivity	Human;Mouse;Rat
Applications	WB;ELISA
Gene Name	CNN3
Protein Name	Calponin-3 (Calponin, acidic isoform)
Immunogen	Synthesized peptide derived from part region of human protein
Specificity	CNN3 Polyclonal Antibody detects endogenous levels of protein.
Formulation	Liquid in PBS containing 50% glycerol, and 0.02% sodium azide.
Source	Polyclonal, Rabbit,IgG
Purification	The antibody was affinity-purified from rabbit antiserum by affinity-chromatography using epitope-specific immunogen.
Dilution	WB 1:500-2000 ELISA 1:5000-20000
Concentration	1 mg/ml
Purity	≥90%
Storage Stability	-20°C/1 year
Synonyms	
Observed Band	36kD
Cell Pathway	cytoplasm,cell-cell adherens junction,focal adhesion,postsynaptic density,actin cytoskeleton,neuronal cell body,dendritic spine,
Tissue Specificity	Expressed in both non-smooth muscle tissues as well as smooth muscle tissues.
Function	function:Thin filament-associated protein that is implicated in the regulation and modulation of smooth muscle contraction. It is capable of binding to actin, calmodulin, troponin C and tropomyosin. The interaction of calponin with actin inhibits the actomyosin Mg-ATPase activity.,similarity:Belongs to the calponin family.,similarity:Contains 1 CH (calponin-homology) domain.,similarity:Contains 3 calponin-like repeats.,tissue specificity:Expressed in both non-smooth muscle tissues as well as smooth muscle tissues.,
Background	This gene encodes a protein with a markedly acidic C terminus; the basic N-terminus is highly homologous to the N-terminus of a related gene, CNN1. Members of the CNN gene family all contain similar tandemly repeated motifs. This encoded protein is associated with the cytoskeleton but is not involved in

Nanjing BYabscience technology Co.,Ltd



contraction. [provided by RefSeq, Jul 2008],

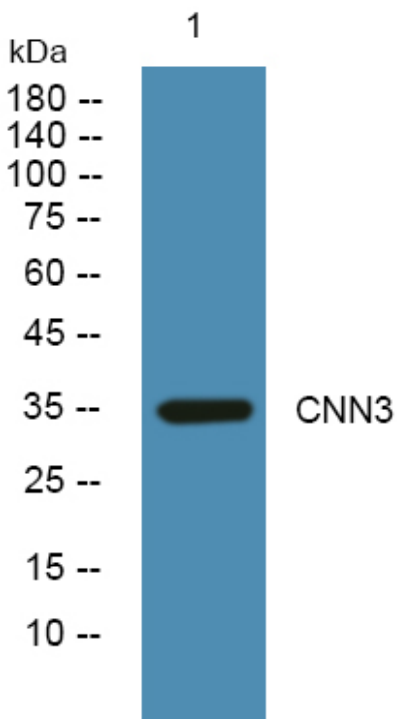
matters needing attention

Avoid repeated freezing and thawing!

Usage suggestions

This product can be used in immunological reaction related experiments. For more information, please consult technical personnel.

Products Images



Western blot analysis of lysates from SW480 cells, primary antibody was diluted at 1:1000, 4° over night