



# CPNS2 Polyclonal Antibody

<b>Catalog No</b>	BYab-05410
<b>Isotype</b>	IgG
<b>Reactivity</b>	Human;Mouse
<b>Applications</b>	WB;ELISA
<b>Gene Name</b>	CAPNS2
<b>Protein Name</b>	Calpain small subunit 2 (CSS2) (Calcium-dependent protease small subunit 2)
<b>Immunogen</b>	Synthesized peptide derived from part region of human protein
<b>Specificity</b>	CPNS2 Polyclonal Antibody detects endogenous levels of protein.
<b>Formulation</b>	Liquid in PBS containing 50% glycerol, and 0.02% sodium azide.
<b>Source</b>	Polyclonal, Rabbit,IgG
<b>Purification</b>	The antibody was affinity-purified from rabbit antiserum by affinity-chromatography using epitope-specific immunogen.
<b>Dilution</b>	WB 1:500-2000 ELISA 1:5000-20000
<b>Concentration</b>	1 mg/ml
<b>Purity</b>	≥90%
<b>Storage Stability</b>	-20°C/1 year
<b>Synonyms</b>	
<b>Observed Band</b>	27kD
<b>Cell Pathway</b>	Cytoplasm . Cell membrane . Translocates to the plasma membrane upon calcium binding. .
<b>Tissue Specificity</b>	Urinary bladder carcinoma,
<b>Function</b>	function:Calcium-regulated non-lysosomal thiol-protease which catalyzes limited proteolysis of substrates involved in cytoskeletal remodeling and signal transduction. This small subunit may act as a tissue-specific chaperone of the large subunit, possibly by helping it fold into its correct conformation for activity.,similarity:Contains 4 EF-hand domains.,subcellular location:Translocates to the plasma membrane upon calcium binding.,subunit:Heterodimer of a large (catalytic) and a small (regulatory) subunit.,
<b>Background</b>	function:Calcium-regulated non-lysosomal thiol-protease which catalyzes limited proteolysis of substrates involved in cytoskeletal remodeling and signal transduction. This small subunit may act as a tissue-specific chaperone of the large subunit, possibly by helping it fold into its correct conformation for

**Nanjing BYabscience technology Co.,Ltd**



activity.,similarity:Contains 4 EF-hand domains.,subcellular location:Translocates to the plasma membrane upon calcium binding.,subunit:Heterodimer of a large (catalytic) and a small (regulatory) subunit.,

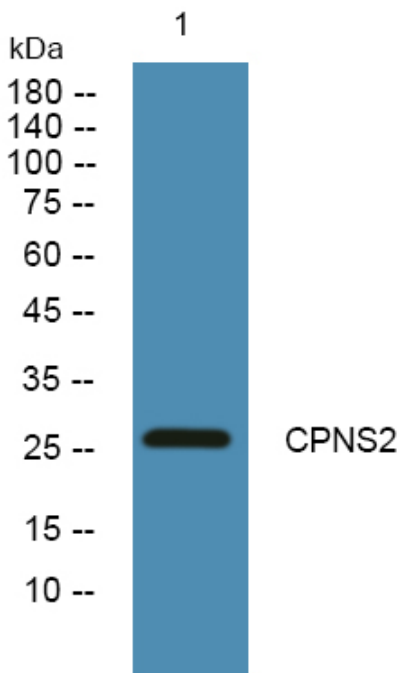
**matters needing attention**

Avoid repeated freezing and thawing!

**Usage suggestions**

This product can be used in immunological reaction related experiments. For more information, please consult technical personnel.

## Products Images



Western blot analysis of lysates from Jarkat cells, primary antibody was diluted at 1:1000, 4° over night