



CABP4 Polyclonal Antibody

Catalog No	BYab-05401
Isotype	IgG
Reactivity	Human;Mouse
Applications	WB;ELISA
Gene Name	CABP4
Protein Name	Calcium-binding protein 4 (CaBP4)
Immunogen	Synthesized peptide derived from part region of human protein
Specificity	CABP4 Polyclonal Antibody detects endogenous levels of protein.
Formulation	Liquid in PBS containing 50% glycerol, and 0.02% sodium azide.
Source	Polyclonal, Rabbit,IgG
Purification	The antibody was affinity-purified from rabbit antiserum by affinity-chromatography using epitope-specific immunogen.
Dilution	WB 1:500-2000 ELISA 1:5000-20000
Concentration	1 mg/ml
Purity	≥90%
Storage Stability	-20°C/1 year
Synonyms	
Observed Band	30kD
Cell Pathway	Cytoplasm . Cell junction, synapse, presynapse . Found in rod spherules and cone pedicles of the presynapses from both types of photoreceptors. .
Tissue Specificity	Expressed in retina and in the inner hair cells (IHC) of the cochlea.
Function	disease:Defects in CABP4 are the cause of congenital stationary night blindness type 2B (CSNB2B) [MIM:610427]. Congenital stationary night blindness is a non-progressive retinal disorder characterized by impaired night vision.,function:May play a role in normal synaptic function, probably through regulation of Ca(2+) influx and neurotransmitter release in photoreceptor synaptic terminals. Modulator of CACNA1F, shifting the activation range to more hyperpolarized voltages.,similarity:Contains 4 EF-hand domains.,subcellular location:Found in rod spherules and cone pedicles of the presynapses from both types of photoreceptors.,subunit:Interacts with CACNA1F.,
Background	This gene encodes a member of the CABP family of calcium binding protein characterized by four EF-hand motifs. Mutations in this gene are associated with

Nanjing BYabscience technology Co.,Ltd



congenital stationary night blindness type 2B. Three transcript variants encoding two different isoforms have been found for this gene. [provided by RefSeq, Jul 2014],

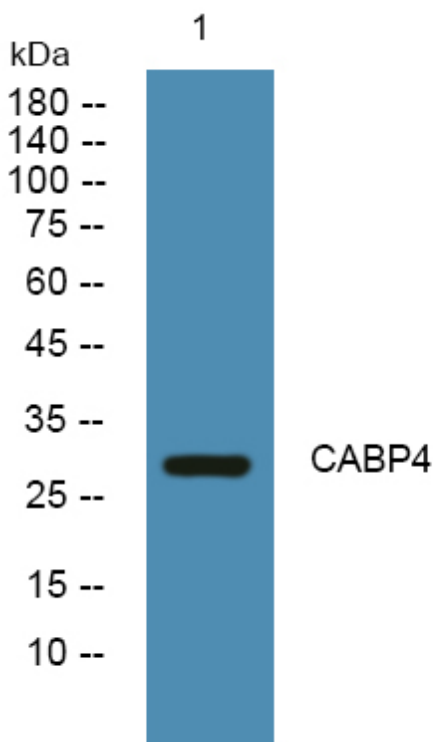
matters needing attention

Avoid repeated freezing and thawing!

Usage suggestions

This product can be used in immunological reaction related experiments. For more information, please consult technical personnel.

Products Images



Western blot analysis of lysates from K562 cells, primary antibody was diluted at 1:1000, 4° over night