



CHERP Polyclonal Antibody

Catalog No	BYab-05392
Isotype	IgG
Reactivity	Human;Mouse
Applications	WB;ELISA
Gene Name	CHERP DAN26 SCAF6
Protein Name	Calcium homeostasis endoplasmic reticulum protein (ERPROT 213-21) (SR-related CTD-associated factor 6)
Immunogen	Synthesized peptide derived from part region of human protein
Specificity	CHERP Polyclonal Antibody detects endogenous levels of protein.
Formulation	Liquid in PBS containing 50% glycerol, and 0.02% sodium azide.
Source	Polyclonal, Rabbit,IgG
Purification	The antibody was affinity-purified from rabbit antiserum by affinity-chromatography using epitope-specific immunogen.
Dilution	WB 1:500-2000 ELISA 1:5000-20000
Concentration	1 mg/ml
Purity	≥90%
Storage Stability	-20°C/1 year
Synonyms	
Observed Band	100kD
Cell Pathway	Cytoplasm . Cytoplasm, perinuclear region . Endoplasmic reticulum . Distributed throughout the cytoplasm and also localizes to the perinuclear region of both human erythroleukemia (HEL) cells and Jurkat cells. Colocalizes with ITPR1. .
Tissue Specificity	Expressed in brain, placenta, lung, liver, kidney, pancreas, cardiac and skeletal muscle, and in cultured HEL and Dami cells.
Function	function:Involved in calcium homeostasis, growth and proliferation.,sequence caution:Translation N-terminally shortened.,similarity:Contains 1 CID domain.,similarity:Contains 1 G-patch domain.,similarity:Contains 1 SURP motif repeat.,subcellular location:Distributed throughout the cytoplasm and also localizes to the perinuclear region of both human erythroleukemia (HEL) cells and Jurkat cells. Colocalizes with ITPR1.,tissue specificity:Expressed in brain, placenta, lung, liver, kidney, pancreas, cardiac and skeletal muscle, and in cultured HEL and Dami cells.,

Nanjing BYabscience technology Co.,Ltd



Background

function:Involved in calcium homeostasis, growth and proliferation.,sequence caution:Translation N-terminally shortened.,similarity:Contains 1 CID domain.,similarity:Contains 1 G-patch domain.,similarity:Contains 1 SURP motif repeat.,subcellular location:Distributed throughout the cytoplasm and also localizes to the perinuclear region of both human erythroleukemia (HEL) cells and Jurkat cells. Colocalizes with ITPR1.,tissue specificity:Expressed in brain, placenta, lung, liver, kidney, pancreas, cardiac and skeletal muscle, and in cultured HEL and Dami cells.,

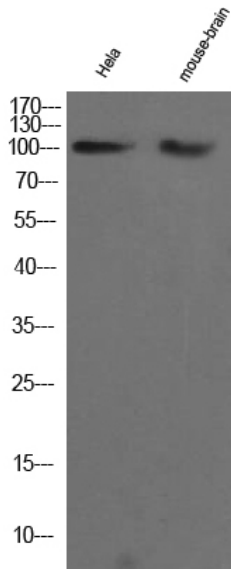
matters needing attention

Avoid repeated freezing and thawing!

Usage suggestions

This product can be used in immunological reaction related experiments. For more information, please consult technical personnel.

Products Images



Western Blot analysis of hela and mouse brain cell lysis. Primary Antibody was diluted at 1:1000. Secondary antibody(catalog#:RS23920 was diluted at 1:10000