



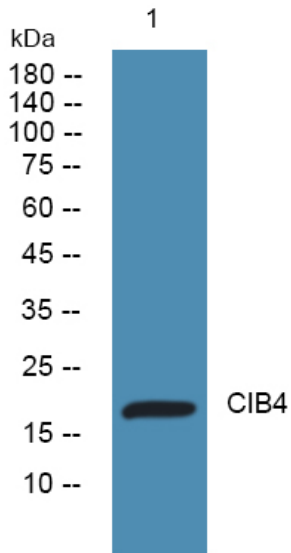
CIB4 Polyclonal Antibody

Catalog No	BYab-05391
Isotype	IgG
Reactivity	Human;Rat;Mouse;
Applications	WB;ELISA
Gene Name	CIB4
Protein Name	Calcium and integrin-binding family member 4
Immunogen	Synthesized peptide derived from part region of human protein
Specificity	CIB4 Polyclonal Antibody detects endogenous levels of protein.
Formulation	Liquid in PBS containing 50% glycerol, and 0.02% sodium azide.
Source	Polyclonal, Rabbit,IgG
Purification	The antibody was affinity-purified from rabbit antiserum by affinity-chromatography using epitope-specific immunogen.
Dilution	WB 1:500-2000 ELISA 1:5000-20000
Concentration	1 mg/ml
Purity	≥90%
Storage Stability	-20°C/1 year
Synonyms	
Observed Band	20kD
Cell Pathway	
Tissue Specificity	
Function	similarity:Contains 3 EF-hand domains.,
Background	similarity:Contains 3 EF-hand domains.,
matters needing attention	Avoid repeated freezing and thawing!
Usage suggestions	This product can be used in immunological reaction related experiments. For more information, please consult technical personnel.

Nanjing BYabscience technology Co.,Ltd



Products Images



Western blot analysis of lysates from HCT116 cells,
primary antibody was diluted at 1:1000, 4° over night