



POPD1 Polyclonal Antibody

Catalog No	BYab-05382
Isotype	IgG
Reactivity	Human;Mouse;Rat
Applications	WB;ELISA
Gene Name	BVES POP1 POPDC1
Protein Name	Blood vessel epicardial substance (hBVES) (Popeye domain-containing protein 1) (Popeye protein 1)
Immunogen	Synthesized peptide derived from part region of human protein
Specificity	POPD1 Polyclonal Antibody detects endogenous levels of protein.
Formulation	Liquid in PBS containing 50% glycerol, and 0.02% sodium azide.
Source	Polyclonal, Rabbit,IgG
Purification	The antibody was affinity-purified from rabbit antiserum by affinity-chromatography using epitope-specific immunogen.
Dilution	WB 1:500-2000 ELISA 1:5000-20000
Concentration	1 mg/ml
Purity	≥90%
Storage Stability	-20°C/1 year
Synonyms	
Observed Band	39kD
Cell Pathway	Lateral cell membrane . Cell junction, tight junction . Membrane ; Multi-pass membrane protein . Cell membrane, sarcolemma . Membrane, caveola . Colocalizes with VAMP3 at the cell-cell contact in cardiac and skeletal muscle (By similarity). Its movement from the cytoplasm to membrane is an early event occurring concurrently with cell-cell contact. Colocalizes in epithelial cells with OCLN and TJP1 in an apical-lateral position within the z axis. Detected at cell-cell contact but never observed at the free surface of epithelial cells. .
Tissue Specificity	Expressed in epithelial cells (at protein level). Expressed in fetal and adult heart and skeletal muscle.
Function	function:May play an important role in heart development.,similarity:Belongs to the popeye family.,tissue specificity:Expressed in fetal and adult heart and skeletal muscle.,
Background	blood vessel epicardial substance(BVES) Homo sapiens This gene encodes a member of the POP family of proteins containing three putative transmembrane domains. This gene is expressed in cardiac and skeletal muscle and may play an

Nanjing BYabscience technology Co.,Ltd



important role in development of these tissues. The mouse ortholog may be involved in the regeneration of adult skeletal muscle and may act as a cell adhesion molecule in coronary vasculogenesis. Three transcript variants encoding the same protein have been found for this gene. [provided by RefSeq, Dec 2010],

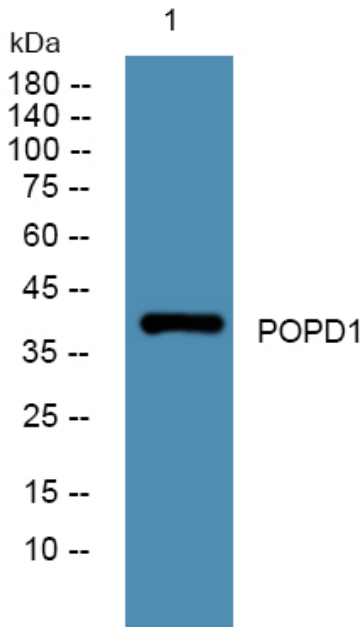
matters needing attention

Avoid repeated freezing and thawing!

Usage suggestions

This product can be used in immunological reaction related experiments. For more information, please consult technical personnel.

Products Images



Western blot analysis of lysates from SW480 cells, primary antibody was diluted at 1:1000, 4° over night