



# RFOX1 Polyclonal Antibody

<b>Catalog No</b>	BYab-05338
<b>Isotype</b>	IgG
<b>Reactivity</b>	Human;Rat;Mouse;
<b>Applications</b>	WB;ELISA
<b>Gene Name</b>	RBFOX1 A2BP A2BP1 FOX1 HRNBP1
<b>Protein Name</b>	RNA binding protein fox-1 homolog 1 (Ataxin-2-binding protein 1) (Fox-1 homolog A) (Hexaribonucleotide-binding protein 1)
<b>Immunogen</b>	Synthesized peptide derived from human protein . at AA range: 50-130
<b>Specificity</b>	RFOX1 Polyclonal Antibody detects endogenous levels of protein.
<b>Formulation</b>	Liquid in PBS containing 50% glycerol, and 0.02% sodium azide.
<b>Source</b>	Polyclonal, Rabbit,IgG
<b>Purification</b>	The antibody was affinity-purified from rabbit antiserum by affinity-chromatography using epitope-specific immunogen.
<b>Dilution</b>	WB 1:500-2000 ELISA 1:5000-20000
<b>Concentration</b>	1 mg/ml
<b>Purity</b>	≥90%
<b>Storage Stability</b>	-20°C/1 year
<b>Synonyms</b>	
<b>Observed Band</b>	43kD
<b>Cell Pathway</b>	Nucleus . Cytoplasm .
<b>Tissue Specificity</b>	Predominantly expressed in muscle and brain.
<b>Function</b>	function:RNA-binding protein that regulates alternative splicing events by binding to 5'-UGCAUGU-3' elements. Regulates alternative splicing of tissue-specific exons and of differentially spliced exons during erythropoiesis.,similarity:Contains 1 RRM (RNA recognition motif) domain.,subunit:Binds to the C-terminal of ATXN2.,tissue specificity:Predominantly expressed in muscle and brain.,
<b>Background</b>	The Fox-1 family of RNA-binding proteins is evolutionarily conserved, and regulates tissue-specific alternative splicing in metazoa. Fox-1 recognizes a (U)GCAUG stretch in regulated exons or in flanking introns. The protein binds to the C-terminus of ataxin-2 and may contribute to the restricted pathology of spinocerebellar ataxia type 2 (SCA2). Ataxin-2 is the product of the SCA2 gene which causes familial neurodegenerative diseases. Fox-1 and ataxin-2 are both

Nanjing BYabscience technology Co.,Ltd



localized in the trans-Golgi network. Several alternatively spliced transcript variants encoding different isoforms have been found for this gene. [provided by RefSeq, Nov 2011],

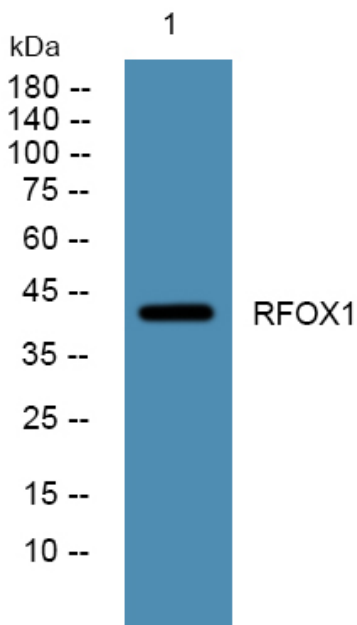
**matters needing attention**

Avoid repeated freezing and thawing!

**Usage suggestions**

This product can be used in immunological reaction related experiments. For more information, please consult technical personnel.

## Products Images



Western blot analysis of lysates from SW480 cells, primary antibody was diluted at 1:1000, 4° over night