



AAA1 Polyclonal Antibody

Catalog No	BYab-05336
Isotype	IgG
Reactivity	Human;Mouse;Rat
Applications	WB;ELISA
Gene Name	SLC7A10 ASC1
Protein Name	Asc-type amino acid transporter 1 (Asc-1) (Solute carrier family 7 member 10)
Immunogen	Synthesized peptide derived from human protein . at AA range: 200-280
Specificity	AAA1 Polyclonal Antibody detects endogenous levels of protein.
Formulation	Liquid in PBS containing 50% glycerol, and 0.02% sodium azide.
Source	Polyclonal, Rabbit,IgG
Purification	The antibody was affinity-purified from rabbit antiserum by affinity-chromatography using epitope-specific immunogen.
Dilution	WB 1:500-2000 ELISA 1:5000-20000
Concentration	1 mg/ml
Purity	≥90%
Storage Stability	-20°C/1 year
Synonyms	
Observed Band	57kD
Cell Pathway	Membrane ; Multi-pass membrane protein .
Tissue Specificity	Expressed in brain, heart, kidney, liver, lung, pancreas, placenta, and skeletal muscle.
Function	disease:Defects in SLC7A10 may be involved in cystinuria (CSNU) which arises from impaired transport of cystine and dibasic amino acids through the epithelial cells of the renal tubule and gastrointestinal tract. Three types of cystinuria have been described.,function:Sodium-independent, high affinity transport of small neutral D- and L-amino acids. May play a role in the modulation of glutamatergic transmission through mobilization of D-serine at the glutamatergic synapse.,similarity:Belongs to the amino acid-polyamine-organocation (APC) superfamily.,subunit:Disulfide-linked heterodimer with the amino acid transport protein SLC3A2/4F2hc.,tissue specificity:Expressed in brain, heart, kidney, liver, lung, pancreas, placenta, and skeletal muscle.,

Nanjing BYabscience technology Co.,Ltd



Background

SLC7A10, in association with 4F2HC (SLC3A2; MIM 158070), mediates high-affinity transport of D-serine and several other neutral amino acids (Nakauchi et al., 2000 [PubMed 10863037]).[supplied by OMIM, Mar 2008],

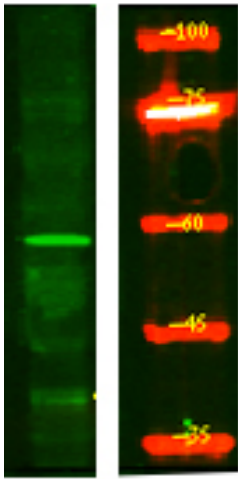
matters needing attention

Avoid repeated freezing and thawing!

Usage suggestions

This product can be used in immunological reaction related experiments. For more information, please consult technical personnel.

Products Images



Western Blot analysis of HEK293 lysis, using primary antibody at 1:1000 dilution. Secondary antibody(catalog#:RS23920) was diluted at 1:10000