



AQP8 Polyclonal Antibody

Catalog No	BYab-05330
Isotype	IgG
Reactivity	Human;Mouse;Rat
Applications	WB;ELISA
Gene Name	AQP8
Protein Name	Aquaporin-8 (AQP-8)
Immunogen	Synthesized peptide derived from human protein . at AA range: 70-150
Specificity	AQP8 Polyclonal Antibody detects endogenous levels of protein.
Formulation	Liquid in PBS containing 50% glycerol, and 0.02% sodium azide.
Source	Polyclonal, Rabbit,IgG
Purification	The antibody was affinity-purified from rabbit antiserum by affinity-chromatography using epitope-specific immunogen.
Dilution	WB 1:500-2000 ELISA 1:5000-20000
Concentration	1 mg/ml
Purity	≥90%
Storage Stability	-20°C/1 year
Synonyms	
Observed Band	28kD
Cell Pathway	Mitochondrion membrane ; Multi-pass membrane protein .
Tissue Specificity	Detected in the sperm midpiece (at protein level) (PubMed:28042826). Expressed only in pancreas and colon.
Function	domain:Aquaporins contain two tandem repeats each containing three membrane-spanning domains and a pore-forming loop with the signature motif Asn-Pro-Ala (NPA).,function:Forms a water-specific channel; mercury-sensitive. Not permeable to glycerol or urea.,similarity:Belongs to the MIP/aquaporin (TC 1.A.8) family.,tissue specificity:Expressed only in pancreas and colon.,
Background	Aquaporin 8 (AQP8) is a water channel protein. Aquaporins are a family of small integral membrane proteins related to the major intrinsic protein (MIP or AQP0). Aquaporin 8 mRNA is found in pancreas and colon but not other tissues. [provided by RefSeq, Jul 2008],

Nanjing BYabscience technology Co.,Ltd



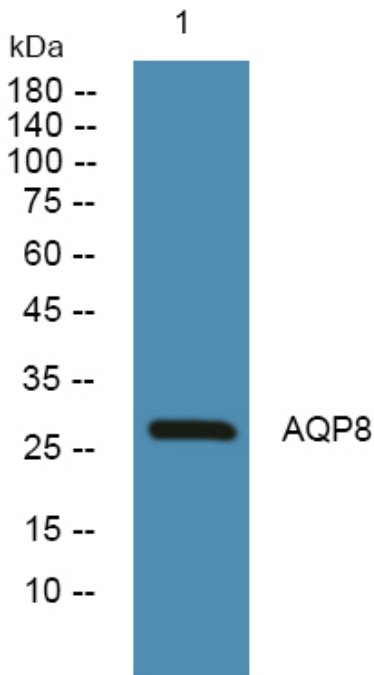
matters needing attention

Avoid repeated freezing and thawing!

Usage suggestions

This product can be used in immunological reaction related experiments. For more information, please consult technical personnel.

Products Images



Western blot analysis of lysates from K562 cells, primary antibody was diluted at 1:1000, 4° over night