



AQP10 Polyclonal Antibody

Catalog No	BYab-05328
Isotype	IgG
Reactivity	Human;Rat;Mouse;
Applications	WB;ELISA
Gene Name	AQP10
Protein Name	Aquaporin-10 (AQP-10) (Aquaglyceroporin-10) (Small intestine aquaporin)
Immunogen	Synthesized peptide derived from human protein . at AA range: 230-310
Specificity	AQP10 Polyclonal Antibody detects endogenous levels of protein.
Formulation	Liquid in PBS containing 50% glycerol, and 0.02% sodium azide.
Source	Polyclonal, Rabbit,IgG
Purification	The antibody was affinity-purified from rabbit antiserum by affinity-chromatography using epitope-specific immunogen.
Dilution	WB 1:500-2000 ELISA 1:5000-20000
Concentration	1 mg/ml
Purity	≥90%
Storage Stability	-20°C/1 year
Synonyms	
Observed Band	33kD
Cell Pathway	Apical cell membrane ; Multi-pass membrane protein . Cell membrane ; Multi-pass membrane protein . Lipid droplet . Detected around lipid droplets. .
Tissue Specificity	Detected in epithelial cells on villi in the ileum, and also in stomach, jejunum, colon, rectum, white adipose tissue and placenta (at protein level) (PubMed:15221416, PubMed:23382902). Expressed in duodenum and jejunum. Highest expression in absorptive epithelial cells at the tips of villi in the jejunum (PubMed:11573934, PubMed:12084581). Detected in subcutaneous adipose tissue (PubMed:23382902).
Function	domain:Aquaporins contain two tandem repeats each containing three membrane-spanning domains and a pore-forming loop with the signature motif Asn-Pro-Ala (NPA).,function:Forms a water channel. Not permeable to urea and glycerol. May contribute to water transport in the upper portion of small intestine.,similarity:Belongs to the MIP/aquaporin (TC 1.A.8) family.,tissue specificity:Expressed exclusively in duodenum and jejunum. Highest expression in absorptive epithelial cells at the tips of villi in the jejunum.,

Nanjing BYabscience technology Co.,Ltd



Background

This gene encodes a member of the aquaglyceroporin family of integral membrane proteins. Members of this family function as water-permeable channels in the epithelia of organs that absorb and excrete water. This protein was shown to function as a water-selective channel, and could also permeate neutral solutes such as glycerol and urea. [provided by RefSeq, Jul 2008],

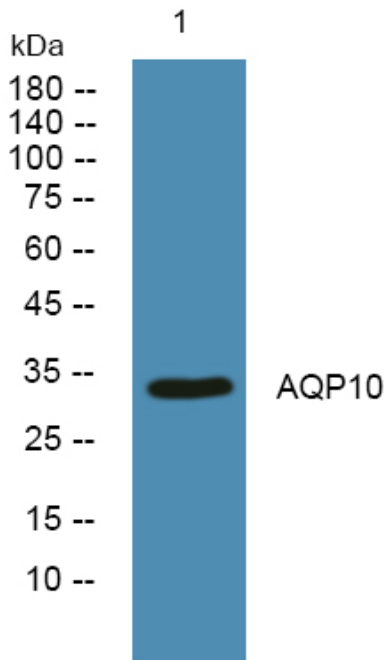
matters needing attention

Avoid repeated freezing and thawing!

Usage suggestions

This product can be used in immunological reaction related experiments. For more information, please consult technical personnel.

Products Images



Western blot analysis of lysates from K562 cells, primary antibody was diluted at 1:1000, 4° over night