



B2L14 Polyclonal Antibody

Catalog No	BYab-05327
Isotype	IgG
Reactivity	Human;Mouse
Applications	WB;ELISA
Gene Name	BCL2L14 BCLG
Protein Name	Apoptosis facilitator Bcl-2-like protein 14 (Bcl2-L-14) (Apoptosis regulator Bcl-G)
Immunogen	Synthesized peptide derived from human protein . at AA range: 200-280
Specificity	B2L14 Polyclonal Antibody detects endogenous levels of protein.
Formulation	Liquid in PBS containing 50% glycerol, and 0.02% sodium azide.
Source	Polyclonal, Rabbit,IgG
Purification	The antibody was affinity-purified from rabbit antiserum by affinity-chromatography using epitope-specific immunogen.
Dilution	WB 1:500-2000 ELISA 1:5000-20000
Concentration	1 mg/ml
Purity	≥90%
Storage Stability	-20°C/1 year
Synonyms	
Observed Band	35kD
Cell Pathway	Cytoplasm .; [Isoform 1]: Cytoplasm, cytosol. Diffusely distributed throughout the cytosol.; [Isoform 2]: Endomembrane system. Predominantly localized to cytosolic organelles.
Tissue Specificity	Isoform 1 is widely expressed. Isoform 2 is testis-specific.
Function	function:May play a role in apoptosis.,similarity:Belongs to the Bcl-2 family.,subcellular location:Diffusely distributed throughout the cytosol.,subcellular location:Predominantly localized to cytosolic organelles.,tissue specificity:Isoform 1 is widely expressed and isoform 2 is testis-specific.,
Background	The protein encoded by this gene belongs to the BCL2 protein family. BCL2 family members form hetero- or homodimers and act as anti- or pro-apoptotic regulators that are involved in a wide variety of cellular activities. Overexpression of this gene has been shown to induce apoptosis in cells. Three alternatively spliced transcript variants encoding two distinct isoforms have been reported for this gene. [provided by RefSeq, May 2009],

Nanjing BYabscience technology Co.,Ltd



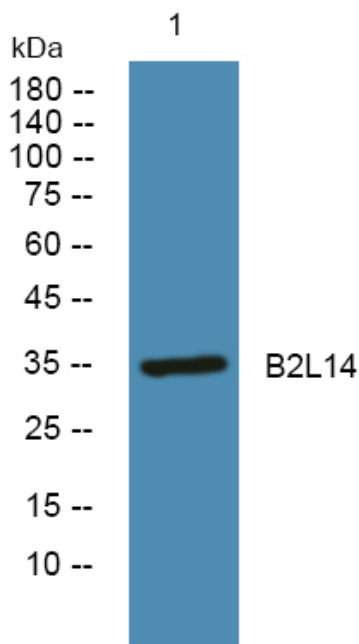
matters needing attention

Avoid repeated freezing and thawing!

Usage suggestions

This product can be used in immunological reaction related experiments. For more information, please consult technical personnel.

Products Images



Western blot analysis of lysates from PC12 cells, primary antibody was diluted at 1:1000, 4° over night