



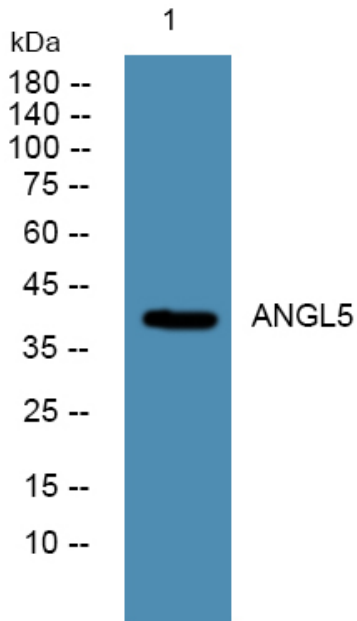
ANGL5 Polyclonal Antibody

| | |
|----------------------------------|---|
| Catalog No | BYab-05320 |
| Isotype | IgG |
| Reactivity | Human;Rat;Mouse; |
| Applications | WB;ELISA |
| Gene Name | ANGPTL5 UNQ5795/PRO19600 |
| Protein Name | Angiopoietin-related protein 5 (Angiopoietin-like protein 5) |
| Immunogen | Synthesized peptide derived from human protein . at AA range: 230-310 |
| Specificity | ANGL5 Polyclonal Antibody detects endogenous levels of protein. |
| Formulation | Liquid in PBS containing 50% glycerol, and 0.02% sodium azide. |
| Source | Polyclonal, Rabbit,IgG |
| Purification | The antibody was affinity-purified from rabbit antiserum by affinity-chromatography using epitope-specific immunogen. |
| Dilution | WB 1:500-2000 ELISA 1:5000-20000 |
| Concentration | 1 mg/ml |
| Purity | ≥90% |
| Storage Stability | -20°C/1 year |
| Synonyms | |
| Observed Band | 42kD |
| Cell Pathway | Secreted . |
| Tissue Specificity | Mainly expressed in adult heart. |
| Function | similarity:Contains 1 fibrinogen C-terminal domain.,tissue specificity:Mainly expressed in adult heart., |
| Background | similarity:Contains 1 fibrinogen C-terminal domain.,tissue specificity:Mainly expressed in adult heart., |
| matters needing attention | Avoid repeated freezing and thawing! |
| Usage suggestions | This product can be used in immunological reaction related experiments. For more information, please consult technical personnel. |

Nanjing BYabscience technology Co.,Ltd



Products Images



Western blot analysis of lysates from HCT116 cells,
primary antibody was diluted at 1:1000, 4° over night