



AL3B2 Polyclonal Antibody

Catalog No	BYab-05302
Isotype	IgG
Reactivity	Human;Rat;Mouse;
Applications	WB;ELISA
Gene Name	ALDH3B2 ALDH8
Protein Name	Aldehyde dehydrogenase family 3 member B2 (EC 1.2.1.5) (Aldehyde dehydrogenase 8)
Immunogen	Synthesized peptide derived from human protein . at AA range: 300-380
Specificity	AL3B2 Polyclonal Antibody detects endogenous levels of protein.
Formulation	Liquid in PBS containing 50% glycerol, and 0.02% sodium azide.
Source	Polyclonal, Rabbit,IgG
Purification	The antibody was affinity-purified from rabbit antiserum by affinity-chromatography using epitope-specific immunogen.
Dilution	WB 1:500-2000 ELISA 1:5000-20000
Concentration	1 mg/ml
Purity	≥90%
Storage Stability	-20°C/1 year
Synonyms	
Observed Band	42kD
Cell Pathway	Lipid droplet .
Tissue Specificity	Salivary gland.
Function	catalytic activity:An aldehyde + NAD(P)(+) + H(2)O = an acid + NAD(P)H.,pathway:Alcohol metabolism; ethanol degradation; acetate from ethanol: step 2/2.,similarity:Belongs to the aldehyde dehydrogenase family.,tissue specificity:Salivary gland.,
Background	This gene encodes a member of the aldehyde dehydrogenase family, a group of isozymes that may play a major role in the detoxification of aldehydes generated by alcohol metabolism and lipid peroxidation. The gene of this particular family member is over 10 kb in length. The expression of these transcripts is restricted to the salivary gland among the human tissues examined. Alternate transcriptional splice variants have been characterized. [provided by RefSeq, Jul 2008],

Nanjing BYabscience technology Co.,Ltd



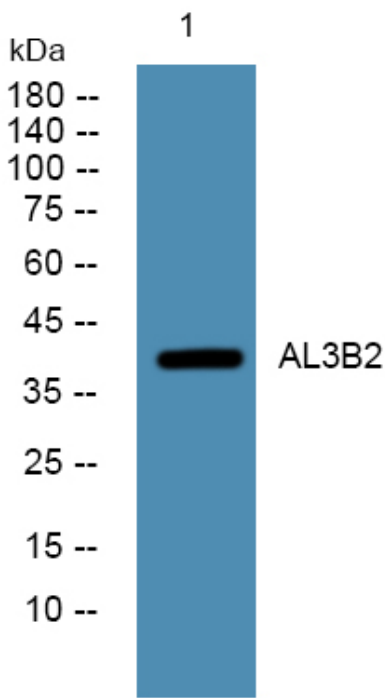
matters needing attention

Avoid repeated freezing and thawing!

Usage suggestions

This product can be used in immunological reaction related experiments. For more information, please consult technical personnel.

Products Images



Western blot analysis of lysates from PC12 cells, primary antibody was diluted at 1:1000, 4° over night