



ADT2 Polyclonal Antibody

Catalog No	BYab-05293
Isotype	IgG
Reactivity	Human;Mouse;Rat
Applications	WB;ELISA
Gene Name	SLC25A5 ANT2
Protein Name	ADP/ATP translocase 2 (ADP,ATP carrier protein 2) (ADP,ATP carrier protein, fibroblast isoform) (Adenine nucleotide translocator 2) (ANT 2) (Solute carrier family 25 member 5)
Immunogen	Synthesized peptide derived from human protein . at AA range: 40-120
Specificity	ADT2 Polyclonal Antibody detects endogenous levels of protein.
Formulation	Liquid in PBS containing 50% glycerol, and 0.02% sodium azide.
Source	Polyclonal, Rabbit,IgG
Purification	The antibody was affinity-purified from rabbit antiserum by affinity-chromatography using epitope-specific immunogen.
Dilution	WB 1:500-2000 ELISA 1:5000-20000
Concentration	1 mg/ml
Purity	≥90%
Storage Stability	-20°C/1 year
Synonyms	
Observed Band	32kD
Cell Pathway	Mitochondrion inner membrane ; Multi-pass membrane protein . Membrane ; Multi-pass membrane protein . May localize to non-mitochondrial membranes. .
Tissue Specificity	Expressed in erythrocytes (at protein level).
Function	function:Catalyzes the exchange of ADP and ATP across the mitochondrial inner membrane.,miscellaneous:The transmembrane helices are not perpendicular to the plane of the membrane, but cross the membrane at an angle. Odd-numbered transmembrane helices exhibit a sharp kink, due to the presence of a conserved proline residue.,similarity:Belongs to the mitochondrial carrier family.,similarity:Contains 3 Solcar repeats.,subunit:Homodimer. Interacts with HIV-1 Vpr.,
Background	This gene is a member of the mitochondrial carrier subfamily of solute carrier protein genes. The product of this gene functions as a gated pore that translocates ADP from the cytoplasm into the mitochondrial matrix and ATP from

Nanjing BYabscience technology Co.,Ltd



the mitochondrial matrix into the cytoplasm. The protein forms a homodimer embedded in the inner mitochondria membrane. Suppressed expression of this gene has been shown to induce apoptosis and inhibit tumor growth. The human genome contains several non-transcribed pseudogenes of this gene.[provided by RefSeq, Jun 2013],

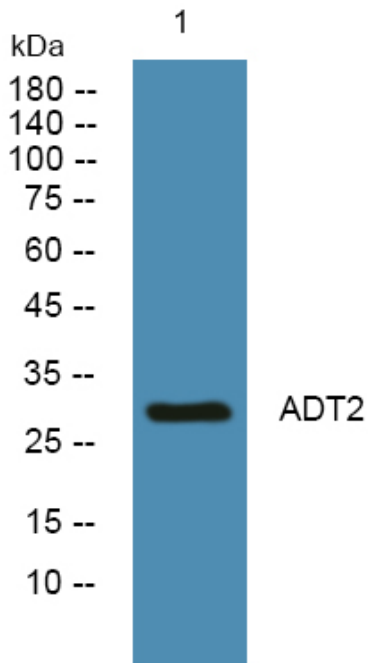
matters needing attention

Avoid repeated freezing and thawing!

Usage suggestions

This product can be used in immunological reaction related experiments. For more information, please consult technical personnel.

Products Images



Western blot analysis of lysates from SH-SY5Y cells, primary antibody was diluted at 1:1000, 4° over night