



# ATS20 Polyclonal Antibody

<b>Catalog No</b>	BYab-05289
<b>Isotype</b>	IgG
<b>Reactivity</b>	Human;Rat;Mouse;
<b>Applications</b>	WB;ELISA
<b>Gene Name</b>	ADAMTS20
<b>Protein Name</b>	A disintegrin and metalloproteinase with thrombospondin motifs 20 (ADAM-TS 20) (ADAM-TS20) (ADAMTS-20) (EC 3.4.24.-)
<b>Immunogen</b>	Synthesized peptide derived from human protein . at AA range: 190-270
<b>Specificity</b>	ATS20 Polyclonal Antibody detects endogenous levels of protein.
<b>Formulation</b>	Liquid in PBS containing 50% glycerol, and 0.02% sodium azide.
<b>Source</b>	Polyclonal, Rabbit,IgG
<b>Purification</b>	The antibody was affinity-purified from rabbit antiserum by affinity-chromatography using epitope-specific immunogen.
<b>Dilution</b>	WB 1:500-2000 ELISA 1:5000-20000
<b>Concentration</b>	1 mg/ml
<b>Purity</b>	≥90%
<b>Storage Stability</b>	-20°C/1 year
<b>Synonyms</b>	
<b>Observed Band</b>	210kD
<b>Cell Pathway</b>	Secreted, extracellular space, extracellular matrix .
<b>Tissue Specificity</b>	Very sparingly expressed, although is detected at low levels in testis, prostate, ovary, heart, placenta, lung and pancreas. Overexpressed in several brain, colon and breast carcinomas.
<b>Function</b>	cofactor: Binds 1 zinc ion per subunit.,function: May play a role in tissue-remodeling process occurring in both normal and pathological conditions.,PTM: The precursor is cleaved by a furin endopeptidase.,similarity: Contains 1 disintegrin domain.,similarity: Contains 1 GON domain.,similarity: Contains 1 peptidase M12B domain.,similarity: Contains 15 TSP type-1 domains.,tissue specificity: Very sparingly expressed, although is detected at low levels in testis, prostate, ovary, heart, placenta, lung and pancreas. Overexpressed in several brain, colon and breast carcinomas.,
<b>Background</b>	The protein encoded by this gene is a member of the ADAMTS family of zinc-dependent proteases. The encoded protein has a signal peptide that is

**Nanjing BYabscience technology Co.,Ltd**



cleaved to release the mature peptide, which is secreted and found in the extracellular matrix. This protein may be involved in tissue remodeling. [provided by RefSeq, Sep 2011],

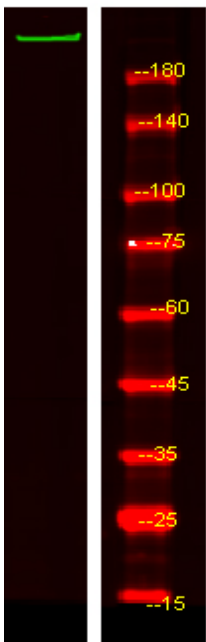
**matters needing attention**

Avoid repeated freezing and thawing!

**Usage suggestions**

This product can be used in immunological reaction related experiments. For more information, please consult technical personnel.

## Products Images



Western Blot analysis of HEK293 lysis, using primary antibody at 1:1000 dilution. Secondary antibody(catalog#:RS23920) was diluted at 1:10000