



ADAM9 Polyclonal Antibody

Catalog No	BYab-05285
Isotype	IgG
Reactivity	Human;Rat;Mouse;
Applications	WB;ELISA
Gene Name	ADAM9 KIAA0021 MCMP MDC9 MLTNG
Protein Name	Disintegrin and metalloproteinase domain-containing protein 9 (ADAM 9) (EC 3.4.24.-) (Cellular disintegrin-related protein) (Meltrin-gamma) (Metalloprotease/disintegrin/cysteine-rich protein 9) (Myelo
Immunogen	Synthesized peptide derived from human protein . at AA range: 120-200
Specificity	ADAM9 Polyclonal Antibody detects endogenous levels of protein.
Formulation	Liquid in PBS containing 50% glycerol, and 0.02% sodium azide.
Source	Polyclonal, Rabbit,IgG
Purification	The antibody was affinity-purified from rabbit antiserum by affinity-chromatography using epitope-specific immunogen.
Dilution	WB 1:500-2000 ELISA 1:5000-20000
Concentration	1 mg/ml
Purity	≥90%
Storage Stability	-20°C/1 year
Synonyms	
Observed Band	90kD
Cell Pathway	[Isoform 1]: Cell membrane ; Single-pass type I membrane protein .; [Isoform 2]: Secreted .
Tissue Specificity	Widely expressed. Expressed in chondrocytes. Isoform 2 is highly expressed in liver and heart.
Function	caution:Has sometimes been referred to as ADAM-12.,cofactor:Binds 1 zinc ion per subunit.,function:Probable zinc protease. May mediate cell-cell or cell-matrix interactions. Isoform 2 displays alpha-secretase activity for APP.,similarity:Contains 1 disintegrin domain.,similarity:Contains 1 EGF-like domain.,similarity:Contains 1 peptidase M12B domain.,tissue specificity:Widely expressed. Expressed in chondrocytes. Highest expression of isoform 2 found in liver and heart.,
Background	This gene encodes a member of the ADAM (a disintegrin and metalloprotease domain) family. Members of this family are membrane-anchored proteins structurally related to snake venom disintegrins, and have been implicated in a

Nanjing BYabscience technology Co.,Ltd



variety of biological processes involving cell-cell and cell-matrix interactions, including fertilization, muscle development, and neurogenesis. The protein encoded by this gene interacts with SH3 domain-containing proteins, binds mitotic arrest deficient 2 beta protein, and is also involved in TPA-induced ectodomain shedding of membrane-anchored heparin-binding EGF-like growth factor. Several alternatively spliced transcript variants have been identified for this gene. [provided by RefSeq, Jul 2010],

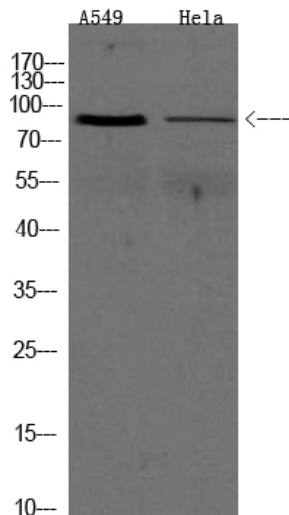
matters needing attention

Avoid repeated freezing and thawing!

Usage suggestions

This product can be used in immunological reaction related experiments. For more information, please consult technical personnel.

Products Images



Western Blot analysis of various cell lysis. Primary Antibody was diluted at 1:1000. Secondary antibody(catalog#:RS23920) was diluted at 1:10000

Nanjing BYabscience technology Co.,Ltd