



NIP7 Polyclonal Antibody

Catalog No	BYab-05258
Isotype	IgG
Reactivity	Human;Mouse;Rat
Applications	WB;ELISA
Gene Name	NIP7 CGI-37 HSPC031 HSPC180 OK/SW-cl.76 OK/SW-cl.78
Protein Name	60S ribosome subunit biogenesis protein NIP7 homolog (KD93)
Immunogen	Synthesized peptide derived from human protein . at AA range: 90-170
Specificity	NIP7 Polyclonal Antibody detects endogenous levels of protein.
Formulation	Liquid in PBS containing 50% glycerol, and 0.02% sodium azide.
Source	Polyclonal, Rabbit,IgG
Purification	The antibody was affinity-purified from rabbit antiserum by affinity-chromatography using epitope-specific immunogen.
Dilution	WB 1:500-2000 ELISA 1:5000-20000
Concentration	1 mg/ml
Purity	≥90%
Storage Stability	-20°C/1 year
Synonyms	
Observed Band	19kD
Cell Pathway	Nucleus, nucleolus .
Tissue Specificity	Expressed in hematopoietic stem/progenitor cells.
Function	function:Required for proper 27S pre-rRNA processing and 60S ribosome subunit assembly.,similarity:Belongs to the NIP7 family.,similarity:Contains 1 PUA domain.,subunit:Monomer. Interacts with pre-ribosome complex. May bind to RNA (By similarity). Interacts with NOL8. May interact with SBDS.,
Background	function:Required for proper 27S pre-rRNA processing and 60S ribosome subunit assembly.,similarity:Belongs to the NIP7 family.,similarity:Contains 1 PUA domain.,subunit:Monomer. Interacts with pre-ribosome complex. May bind to RNA (By similarity). Interacts with NOL8. May interact with SBDS.,
matters needing attention	Avoid repeated freezing and thawing!

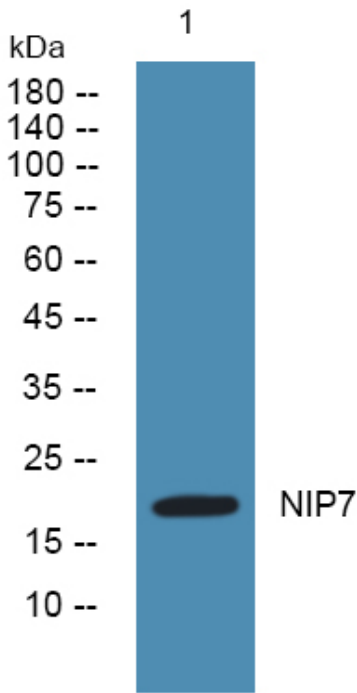
Nanjing BYabscience technology Co.,Ltd



Usage suggestions

This product can be used in immunological reaction related experiments. For more information, please consult technical personnel.

Products Images



Western blot analysis of lysates from SH-SY5Y cells, primary antibody was diluted at 1:1000, 4° over night