



RLA0 Polyclonal Antibody

Catalog No	BYab-05246
Isotype	IgG
Reactivity	Human;Mouse;Rat
Applications	WB;ELISA
Gene Name	RPLP0
Protein Name	60S acidic ribosomal protein P0 (60S ribosomal protein L10E)
Immunogen	Synthesized peptide derived from human protein . at AA range: 240-320
Specificity	RLA0 Polyclonal Antibody detects endogenous levels of protein.
Formulation	Liquid in PBS containing 50% glycerol, and 0.02% sodium azide.
Source	Polyclonal, Rabbit,IgG
Purification	The antibody was affinity-purified from rabbit antiserum by affinity-chromatography using epitope-specific immunogen.
Dilution	WB 1:500-2000 ELISA 1:5000-20000
Concentration	1 mg/ml
Purity	≥90%
Storage Stability	-20°C/1 year
Synonyms	
Observed Band	34kD
Cell Pathway	Nucleus . Cytoplasm . Localized in cytoplasmic mRNP granules containing untranslated mRNAs (PubMed:19188445, PubMed:17289661). .
Tissue Specificity	Adipose tissue,Brain,Cervix,Cervix carcinoma,Colon,Coronary
Function	function:Ribosomal protein P0 is the functional equivalent of E.coli protein L10.,similarity:Belongs to the ribosomal protein L10P family.,subunit:P0 forms a pentameric complex by interaction with dimers of P1 and P2.,subunit:P0 forms a pentameric complex by interaction with dimers of P1 and P2. Interacts with Lassa virus Z protein.,
Background	Ribosomes, the organelles that catalyze protein synthesis, consist of a small 40S subunit and a large 60S subunit. Together these subunits are composed of 4 RNA species and approximately 80 structurally distinct proteins. This gene encodes a ribosomal protein that is a component of the 60S subunit. The protein, which is the functional equivalent of the E. coli L10 ribosomal protein, belongs to the L10P family of ribosomal proteins. It is a neutral phosphoprotein with a C-terminal end

Nanjing BYabscience technology Co.,Ltd



that is nearly identical to the C-terminal ends of the acidic ribosomal phosphoproteins P1 and P2. The P0 protein can interact with P1 and P2 to form a pentameric complex consisting of P1 and P2 dimers, and a P0 monomer. The protein is located in the cytoplasm. Transcript variants derived from alternative splicing exist; they encode the same protein. As is typical for genes encoding ribosomal pro

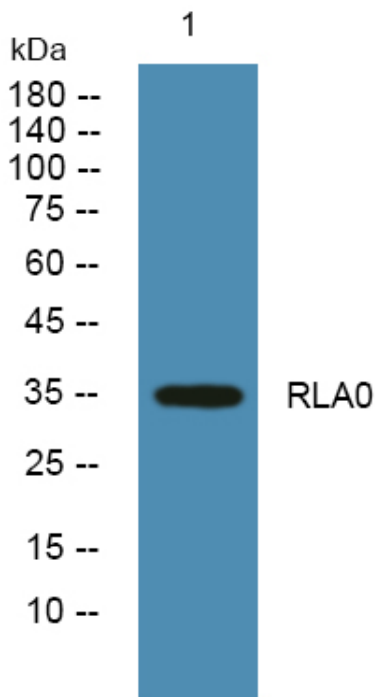
matters needing attention

Avoid repeated freezing and thawing!

Usage suggestions

This product can be used in immunological reaction related experiments. For more information, please consult technical personnel.

Products Images



Western blot analysis of lysates from Jarkat cells, primary antibody was diluted at 1:1000, 4° over night